

REQUEST FOR PROPOSAL  
ADDENDUM 2 – April 5, 2021

The University of Texas Health Science Center at Houston  
Behavioral Sciences Center

*RFP No.: 744-R2101- Behavioral Sciences Center Furniture*

Pre-Bid Meeting: Monday, March 22, 2021 at 10:00 A.M. CST

Last Day For Questions: Wednesday, March 31, 2021 at 5:00 P.M. CST

Bid Submittal Deadline: Monday, April 12, 2021 at 5:00 P.M. CST

HUB Submittal Deadline: Monday, April 12, 2021 at 5:00 P.M. CST



Prepared By:  
Shelby Papp, CannonDesign  
On behalf of:  
Ismael Rodriguez, Buyer II  
The University of Texas Health Science Center at Houston  
1851 Crosspoint, OCB 1.160  
Houston, Texas 77054  
Ismael.rodriguez@uth.tmc.edu  
March 09, 2021

**REQUEST FOR PROPOSAL  
ADDENDUM 2**

**TABLE OF CONTENTS**

**QUESTIONS AND ANSWERS: (6) PAGES**

**APPENDIX SEVEN: FURNITURE SPECIFICATIONS**

A-2	D-5R
BD-1	D-6
CH-3C	D-6R
CH-4B	D-7
CH-9A	D-8
CH-9B	D-9
CH-9C	D-10
CH-9D	ST-1
CH-9E	ST-2
CH-11A	ST-3
CH-11B	T-9
CH-11C	T-11
CH-11D	T-12A
CH-11E	T-12B
CH-12	T-12C
CH-13	T-12D
CH-17	T-12E
CH-27	WD-1
D-2R	WS-1
D-5L	

**APPENDIX EIGHT: FURNITURE PLANS**

IF1.1A	IF3.1A
IF1.1B	IF3.1B
IF1.1C	IF3.1D
IF1.1D	IF3.1E
IF1.1E	IF4.1A
IF2.1A	IF4.1B
IF2.1B	IF4.1D
IF2.1D	IF4.1E

**APPENDIX ELEVEN: BID TABS**

PKG 4	PKG 5B
PKG 4B	PKG 6
PKG 5	PKG 6B
PKG 5A	PKG 8

## UT Health RFP Questions and Answers – Issued as part of Addendum 2

1. Can we provide substitutes for other manufacturers? **We are not accepting substitutions.**
2. Reason for no sub package for Global furniture? **Sub-package for Global has been added. See Appendix 11 – Addendum 1 (Bid Tabs)**
3. Seeing no package for Global, will it be sent later? **Sub-package for Global has been added. See Appendix 11 – Addendum 1 (Bid Tabs)**
4. Seeing no package for SC and Knoll, can we do substitutes? **We are not accepting substitutions.**
5. Are the Alternate 1 & Alternate 2 packages coming at a later date also? **Alternate 1/Alternate A packages are 1A, 3A, 4A, 5A, 6A, 7A, 8A, 9A. Alternate 2/Alternate B packages are 3B, 4B, 6B, 7B, 8B, 10B.**
6. Question: Section 5.2.1 of the RFP for the Behavioral Sciences Center mentions “You must include with your bid a letter of intent from a surety company indication your firm’s ability to obtain payment and performance bonds **for the entire construction cost of the project.**” Will you provide me with the construction cost of the project?  
**reference sections 5.1.1.1 and 5.1.1.2 from TFC 2015 UGC-this outlines which bonds would be required depending on contract amount. Contract amount is per furniture sub-package**
7. No bonds will be required, if the cost is minimal. **Bonding requirements are set forth in Article 5 of the Uniform General and Supplementary Conditions, see Appendix Five.**
8. Are we to provide a Steelcase solution for the private offices? Is there a document or process we should use to submit that information? **We are not accepting substitutions.**
9. Can we provide alternates to other non-Steelcase items listed in the bid documents? **We are not accepting substitutions.**
10. The Steelcase pieces that are called out, those tags are not included in the pricing tab. Where should we include those? **Steelcase sub-package has been added. See Appendix 11-Addendum 1 (Bid Tabs).**
11. On page 13 of RFP, 2 alternates are mentioned – can you clarify with further description what these alternates are and how we submit? **Alternate 1/Alternate A packages are 1A, 3A, 4A, 5A, 6A, 7A, 8A, 9A. Alternate 2/Alternate B packages are 3B, 4B, 6B, 7B, 8B, 10B.**
12. Will we be getting a PDF of Appendix 1. **Appendix 1 was included in the original RFP document sent – Starts on page 16.**
13. May we receive a CAD file for this project? **A one drive link of the CAD file was sent out. Contact [echenier@cannondesign.com](mailto:echenier@cannondesign.com) if you did not receive that.**

14. Will each sub-package that is awarded be on one purchase order? The goal is (1) PO for each dealer. We will, however, need to be able to manage delivery and installation time frames so this may preclude the option of a single PO. This will be evaluated as we move forward.
15. Can you please confirm if the phased dates provided are construction completion dates, dates that the furniture can begin installing, or other? Phasing Plans are showing furniture install dates that we are currently aware of. There are some areas that are still TBD.
16. Will you send an addendum for ST-3? Yes, please see Addendum 2.
17. T-11 specification is showing a width of 60"W and 66". Please confirm the width of T-11. 66"W. Please see Addendum 2 for full specification.
18. T-12A, T-12B, T-12C, T-12D, T-12E Global Bungee Table laminate discontinued – Tiger Maple TBD
19. What is the fabric selection of CH-4B? Designtex Sorano Smoky. Please see Addendum 2 for full specification.
20. D-7: Confirm grommet locations. Please see Addendum 2 for full specification.
21. D-7: Laminate code for "COP" is called "Linen", not "Blonde". Please confirm which one is needed. Linen COP is needed. Please see Addendum 2 for full specification.
22. D-8: Confirm grommet locations. Please see Addendum 2 for full specification.
23. D-8: Laminate code for "COP" is called "Linen", not "Blonde". Please confirm which one is needed. Linen COP is needed. Please see Addendum 2 for full specification.
24. D-9: Confirm grommet locations. Please see Addendum 2 for full specification.
25. D-9: Laminate code for "COP" is called "Linen", not "Blonde". Please confirm which one is needed. Linen COP is needed. Please see Addendum 2 for full specification.
26. D-9: Do we need a tackboard fabric selection? Camira Patina Layered PAT12. Please see Addendum 2 for full specification.
27. D-9: Is undercabinet lighting needed for this typical? Yes, undercabinet LED lighting is needed. Please see Addendum 2 for full specification.
28. D-10: Confirm grommet locations. Please see Addendum 2 for full specification.
29. D-10: Laminate code for "COP" is called "Linen", not "Blonde". Please confirm which one is needed. Linen COP is needed. Please see Addendum 2 for full specification.



30. CH-17: Unfortunately, grey arm caps have been phased out and are no longer available. The only poly colors we can do are black or taupe. Or we can do a wood arm cap? Please let us know how to proceed. **Taupe Polyurethane arm caps. Please see Addendum 2 for full specification.**
31. Phase 1 is noted to start July 5<sup>th</sup>, will this be able to move out or except furniture for this phase later because the lead time for some of the manufactures are 10-12 weeks? **We will address all delivery timeframes with awarded dealers.**
32. All the ERG Ojai Lounge chair specs call for wood arm cap to be black-Please clarify which wood stain specific. They don't have a solid black option however the closest options are the Smoky Charcoal or Wenge. **Changing to charcoal polyurethane arm caps. Please see Addendum 2 for full specification.**
33. CH-17: They no longer offer Grey arm caps for the poly only Black or Taupe. Please confirm. **Taupe Polyurethane arm caps. Please see Addendum 2 for full specification.**
34. IF2.1A/RM 2A06- CH-9A Missing on DWG, Confirm (2) are needed. **Yes, there are (2) CH-9A's here. Please see Addendum 2.**
35. IF2.1D/RM 2C18- Chairs not tagged, Confirm they are CH-15 or other. **Yes, there is (1) CH-15 here. Please see Addendum 2.**
36. IF2.1D/RM 2C19- Table not tagged, Confirm it is a T-5 or other. **Yes, there is (1) T-5 here. Please see Addendum 2.**
37. IF2.1D/RM 2C19- Chairs not tagged, Confirm they are CH-9D or other. **Yes, there are (2) CH-9D's here. Please see Addendum 2.**
38. IF3.1B/RM 3B07- Chairs not tagged, Confirm they are CH-9E or other. **Yes, there are (2) CH-9E's here. Please see Addendum 2.**
39. IF3.1E/RM 3D07- WD-1 missing on DWG, Confirm. **Should be (2) total WD-1's here. Please see Addendum 2.**
40. IF4.1A/RM 4A03- Desk not tagged, Confirm it is a D-1R or other. **Desk should be tagged as D-1R. Please see Addendum 2.**
41. IF4.1B/RM 4B15- Table not tagged, Confirm it is a T-9 or other. **Table should be tagged as T-9. Please see Addendum 2.**
42. BC-1 Confirm it is a PVC edge. **The specification sheet says 3mm PVC edge banding that can be same finish as specified laminate for rest of cabinet.**
43. BD-1 Does the mattress need to be included? **Mattress for BD-1's will be provided by UT Health.**
44. CH-27 Mitt Lounge Chair does not have the manufacturer called out but I deduce it is Bernhardt Design. What manufacturer should this be quoted as? **Manufacturer is Bernhardt. Please see**

Addendum 2 for full specification. Please see Bid Tabs from Addendum 2 for what package Bernhardt is attached to.

45. S-2 does not have complete specification called out, they are described as sofas. What are the details for this product? Please disregard S-2 – not used in project
46. S-8 does not have complete specification called out, they are described as sofas. What are the details for this product? Please disregard S-8 – not used in project
47. ST-1 does not have complete specifications called out. What are the details for this product? Please see Addendum 2 for full specification.
48. ST-2 does not have complete specifications called out. What are the details for this product? Please see Addendum 2 for full specification.
49. A-2 Rubbermaid does not list a quantity. What quantity should be quoted? see Addendum 2
50. Norix: T-3, T-4, T-5 are we responsible to bolt these tables? Yes.
51. Stance: do you need us to secure the platform bed to the floor and the wardrobe and desk to the wall? Yes. Bed should be secured to floor. Wardrobe, desk and bedside cabinet should be fasten to wall.
52. Can you please confirm the delivery phases, please? (i.e. which area is first, second, third, etc.)? Do you have a tentative schedule for delivery dates? Phase Dates were sent with original RFP in Appendix 12 – Install Dates and Phases
53. Has it been determined if Vaughn will be mounting items to the floor? If so, will they be providing their own hardware? Dealer is responsible for mounting items to floor and will be responsible for providing hardware.
54. Is all pricing expected to be based off the Premier contract or will other contracts be acceptable?

Accredited GPOs:

- Choice Partners National Purchasing Cooperative
- E&I Cooperative Service, Inc.
- Education Service Center – Region 19 (Allied States Cooperative)
- The Local Government Purchasing Cooperative d/b/a BuyBoard
- National Cooperative Purchasing Alliance (NCPA)
- Premier Health Alliance, LP
- Sourcewell, formerly National Joint Powers Alliance (NJPA)
- Texas Comptroller of Public Accounts (Statewide Procurement Division) (TPASS/TXMAS)
- Texas Department of Information Resources (DIR)
- The University of Texas System Supply Chain Alliance (UTSSCA)

All accreditations will expire August 31, 2021, unless terminated earlier under U.T. System procedures.

55. Do the Ryno Chairs need to be weighted? **Yes, see specification sheets**
56. Do the Ryno benches in patient unit corridors need to be bolted down? **No**
57. Is there an alternate option of CH-3C? It is not offered with an upholstered seat. **See revised spec in Addendum 2**
58. There is a section that asks for a letter of intent from a surety company. This reads like a construction project vs a furniture RFP. Can you confirm if this is indeed something that is required to participate in this RFP?  
If so, it may be cost-prohibitive for a local HUB company. This is not something I have had to provide previously and was told by a bonding company that it could cost \$11,000 and take several months to obtain. **we have removed construction project to : cost of the project.**
59. D-1R and WD-1 – we are two short for each on our count. There is a room STC47 on the end of the room by room lists for these items. We cannot locate room STC47 on the floor plan/drawings? Can you confirm the location of STC47? **There is no STC47 and therefore no D-1R or WS-1 should be counted**
60. BD-1 Platform Bed indicates to Bolt to Floor. Will the GC be handling any bolting to the floor or is that part of the dealer's installation scope? If GC is handling the bolting, will they be providing hardware? **Furniture dealer will be responsible for providing hardware and bolting the product to the floor. Contact manufacturer for recommended hardware.**
61. CH-5C - Our count matches your room by room distribution list at 18. However, your bid subpackage sheet indicated the count should be 13. Can you please confirm the count? **CH-5C happens in PKG 4 Qty (13) and in PKG 4A Qty (5)**
62. T-9 – on the room by room distribution list, there is an entry for 4CC3 corridor. We are not able to locate this corridor 4CC3 and do not see a T-9 in any corridor on the plans. Can you confirm the location of 4CC3 Corridor where this T-9 should be located? Our count on the plans totaled 68 and the bid subpackage sheet count indicates the quantity should be 70, we are off by two and hoping to find these missing 2 in corridor 4CC3. Please confirm. **(70) total T-9 is correct; (62) in PKG 4; (6) in PKG 4A and (2) in PKG 4B; We will confirm the room names and numbers with the awarded bidder**
63. T-3, T-4, T-5 – All of these tables request a bolt down kit, will the GC be bolting these items? If so, will they be providing hardware? It is my understanding that the bolt down kit will be supplied but the hardware will not be included from the manufacturer. Please clarify. **Furniture dealer will be responsible for providing hardware and bolting the product to the floor. Contact manufacturer for recommended hardware.**
64. T-1A – our count matches the room by room distribution list count at 48 total. However, your bid subpackage sheet count indicates 46, please confirm quantity. **(48) is the correct quantity; PKG 6B bid tab form has been corrected**

65. Level 1A - tags are missing for storage items in rooms 1N10D and 1N10C, can you please confirm the tagging? **Those are ST-5**
66. Knoll Typical D-5- can you please confirm if a modesty panel is not required? **No modesty panel is requested however if manufacturer requires it we will add. Please advise and we will update spec if needed.**
67. Knoll Typical D-6- can you please confirm if a modesty panel is not required? **No modesty panel is requested however if manufacturer requires it we will add. Please advise and we will update spec if needed.**
68. Knoll Typical ST-5- the model number in the spec page indicates the bookcase should be a 72" tall when the dimension indicates the bookcase should be 40" tall. Can you please confirm which is correct? **Bookcase should be 72H. Please see Addendum 2.**
69. Knoll Typical D-5 and D-6- it looks like the D-5 and the D-6 are switched on the floor plans. The difference between these two offices is where the hutch is located. Do we follow the tag on the plan or the layout on the plan? Can you please confirm?  
Example would be Level 1 Office 1N25C & 1N25D for the D-5R tag and 1N35C & 1N35D for the D-6 (L/R)  
Another Example-Rooms 1W35, 1W38, 1W39 should be D-6 (L/R), they are labeled as D-5 (L/R), please confirm. **You are correct, the desks were mis-labeled. Please see revisions in Addendum 2**
70. Level 2 Room 2S04 appears it should be a D-2L, it's labeled as D-2R on the plan, please confirm which is correct. **D-2L is correct**
71. Knoll Typical WS-1- Can you please confirm if this desk should have a wall mounted metal overhead cabinet or an overdesk (hutch style) that rests on the worksurface? **Should be hutch**

Project: UTH Continuum of Care Campus  
Project No. 005975.00

Issue Date: 03 MAR 2021  
Revision Date: 05 APR 2021 (2)

**Manufacturer** Rubbermaid  
**Item Name** Trash Can  
**Manufacturer** Rubbermaid  
**Product Name** Office Trash Can  
**Product Number** 4PGN8  
**Finish** Black  
**Description** Stationary black 10 gallon plastic waste basket, No lid  
**Dimensions** 12.5W x 16.25D x 18.25H  
**Special Instructions**



IMAGE MAY NOT PORTRAY EXACT  
SPECIFICATIONS

Provide the Following for Review and Assurance of Specification Information:

## LEVEL 01

### Location

1N10A LOUNGE  
1N10G NP OFFICE  
1N10P TECH WORK

Project: UTH Continuum of Care Campus  
Project No. 005975.00

Issue Date: 03 MAR 2021  
Revision Date: 05 APR 2021 (2)

---

1N10Q STOR.  
1N10R REG.  
1N20N ACTIVITY ROOM  
1N25B OFFICE  
1N25C OFFICE  
1N25D OFFICE  
1N25E OFFICE  
1N25F TRAINEE SUITE  
1N30A PHARMACY  
1N30B LOUNGE  
1N35A LAB & STOR.  
1N35D OFFICE  
1N37 OFFICE (3)  
1N40E STUDENT LOUNGE  
1N40G RSDNT LOUNGE  
1NC10 CORRIDOR  
1NC40 CORRIDOR  
1NH4 CORRIDOR  
1S10A SOFTWARE WORK.  
1S10C OFFICE  
1S20 RECEPTION  
1S22C QAR  
1S22E PSYCHOLOGY SERVICES  
1S22F CMO  
1S22H CFO  
1S22L COO  
1S22M CEO  
1S23B STORAGE  
1S23D WORKROOM  
1S23E LOUNGE  
1S24 CONF  
1S26A OPEN OFFICE  
1S26C OPEN OFFICE  
1S26D DIR. OF BUS. OPS  
1S27C PERFORMANCE  
1S27D RESEARCH DIRECTOR  
1S27E SOCIAL SERVICES  
1S27F CNO

Project: UTH Continuum of Care Campus  
Project No. 005975.00

Issue Date: 03 MAR 2021  
Revision Date: 05 APR 2021 (2)

1S27H DIRECTOR OF NURSING  
1S28A HR OFFICE  
1S28B HR OFFICE  
1S28D HR WORKROOM  
1S28E HR RECEPTION  
1SC10 CORRIDOR  
1SC29 CORRIDOR  
1SH2 CORRIDOR  
1W10B WORK ROOM  
1W35 EHS OFFICE  
1W39 FAC MAN. OFFICE  
1WD1 MDF  
1WH2 CORRIDOR  
1WM1 CENTRAL PLANT

## LEVEL 02

### Location

2A20B NURSE CHARTING  
2B20A NURSE  
2C20A NURSE  
2D20C MED ROOM  
2N04 OFFICE  
2N05 OFFICE  
2N06 OFFICE  
2N08 OFFICE  
2N12 OFFICE  
2N13 OFFICE  
2N14 OFFICE  
2N17 SOILED LINEN  
2S04 OFFICE  
2S05 OFFICE  
2S07 OFFICE  
2S09 RT SHARED OFFICE  
2S11 OFFICE  
2S13 OFFICE  
2S14 OFFICE

## LEVEL 03

### Location

Project: UTH Continuum of Care Campus  
Project No. 005975.00

Issue Date: 03 MAR 2021  
Revision Date: 05 APR 2021 (2)

3A20B NURSE CHARTING

3B20A NURSE

3C20A NURSE

3D20C MED ROOM

3N04 OFFICE

3N05 OFFICE

3N06 OFFICE

3N08 OFFICE

3N12 OFFICE

3N13 OFFICE

3N14 OFFICE

3N17 SOILED LINEN

3S04 OFFICE

3S05 OFFICE

3S07 OFFICE

3S09 RT SHARED OFFICE

3S11 OFFICE

3S13 OFFICE

3S14 OFFICE

#### **LEVEL 04**

##### **Location**

4A20B NURSE CHARTING

4B20A NURSE

4C20A NURSE

4D5-5 BAY 5

4D5D NURSE STATION

4N04 OFFICE

4N05 OFFICE

4N06 OFFICE

4N13 OFFICE

4N14 OFFICE

4S04 OFFICE

4S05 OFFICE

4S12 STF. TOILET

4S16 OFFICE

4S17 OFFICE



Project: UTH Continuum of Care Campus  
Project No. 005975.00

Issue Date: 03 MAR 2021  
Revision Date: 05 APR 2021 (2)

4S18 ECT OFFICE

4S19 OFFICE

4S21 OFFICE

4S26 OFFICE

4S31 OFFICE

4S36 OFFICE

4S38 OFFICE

Project: UTH Continuum of Care Campus  
Project No. 005975.00

Issue Date: 03 MAR 2021  
Revision Date: 05 APR 2021 (2)

**Manufacturer** Stance Healthcare  
**Item Name** Fortress Bed  
**Model #** SF550  
**Description** Platform bed with rounded corners, higher end panels with rounded corners, no storage, open underside, includes bolt-to-floor brackets  
**Dimensions** 38.25"W x 82"L x 15"H



**Special Instructions**  
1. Mattress not in scope

IMAGE MAY NOT PORTRAY EXACT SPECIFICATIONS

Provide the Following for Review and Assurance of Specification Information:

## Laminate Finish FIN-40

**Manufacturer** Stance Healthcare  
**Product Name** Laminate Finish  
**Color** Rustic Cherry  
**Product Number** N/A

**Special Instructions**



## LEVEL 01

### Location

1N40A ON-CALL  
1N40B ON-CALL  
1N40C ON-CALL

## LEVEL 02

Project: UTH Continuum of Care Campus  
Project No. 005975.00

Issue Date: 03 MAR 2021  
Revision Date: 05 APR 2021 (2)

---

**Location**

---

2A01 PATIENT SINGLE  
2A02 PATIENT SINGLE  
2A03 PATIENT DOUBLE  
2A04 PATIENT DOUBLE  
2A05 PATIENT DOUBLE  
2A06 PATIENT DOUBLE  
2A08 PATIENT SINGLE ADA  
2A09 PATIENT SINGLE ADA  
2A10 PATIENT DOUBLE  
2A11 PATIENT DOUBLE  
2A12 PATIENT DOUBLE  
2A13 PATIENT DOUBLE  
2B01 PATIENT SINGLE  
2B02 PATIENT SINGLE  
2B03 PATIENT DOUBLE  
2B04 PATIENT DOUBLE  
2B05 PATIENT DOUBLE  
2B06 PATIENT DOUBLE  
2B07 PATIENT DOUBLE  
2B08 PATIENT SINGLE ADA  
2B09 PATIENT SINGLE ADA  
2B10 PATIENT DOUBLE  
2B11 PATIENT DOUBLE  
2B12 PATIENT DOUBLE  
2B13 PATIENT DOUBLE  
2B14 PATIENT DOUBLE  
2C01 PATIENT SINGLE  
2C02 PATIENT SINGLE  
2C04 PATIENT DOUBLE  
2C05 PATIENT DOUBLE  
2C06 PATIENT DOUBLE  
2C07 PATIENT DOUBLE  
2C08 PATIENT SINGLE ADA  
2C09 PATIENT SINGLE ADA  
2C10 PATIENT DOUBLE  
2C11 PATIENT DOUBLE

Project: UTH Continuum of Care Campus  
Project No. 005975.00

Issue Date: 03 MAR 2021  
Revision Date: 05 APR 2021 (2)

2C12 PATIENT DOUBLE  
2C13 PATIENT DOUBLE  
2C14 PATIENT DOUBLE  
2D01 PATIENT SINGLE  
2D02 PATIENT SINGLE  
2D03 PATIENT DOUBLE  
2D04 PATIENT DOUBLE  
2D05 PATIENT DOUBLE  
2D06 PATIENT DOUBLE  
2D07 PATIENT DOUBLE  
2D08 PATIENT SINGLE ADA  
2D09 PATIENT SINGLE ADA  
2D10 PATIENT DOUBLE  
2D11 PATIENT DOUBLE  
2D12 PATIENT DOUBLE  
2D13 PATIENT DOUBLE

## LEVEL 03

### Location

3A01 PATIENT SINGLE  
3A02 PATIENT SINGLE  
3A03 PATIENT DOUBLE  
3A04 PATIENT DOUBLE  
3A05 PATIENT DOUBLE  
3A06 PATIENT DOUBLE  
3A08 PATIENT SINGLE ADA  
3A09 PATIENT SINGLE ADA  
3A10 PATIENT DOUBLE  
3A11 PATIENT DOUBLE  
3A12 PATIENT DOUBLE  
3A13 PATIENT DOUBLE  
3B01 PATIENT SINGLE  
3B02 PATIENT SINGLE  
3B03 PATIENT DOUBLE  
3B04 PATIENT DOUBLE  
3B05 PATIENT DOUBLE  
3B06 PATIENT DOUBLE  
3B07 PATIENT DOUBLE

Project: UTH Continuum of Care Campus  
Project No. 005975.00

Issue Date: 03 MAR 2021  
Revision Date: 05 APR 2021 (2)

3B08 PATIENT SINGLE ADA  
3B09 PATIENT SINGLE ADA  
3B10 PATIENT DOUBLE  
3B11 PATIENT DOUBLE  
3B12 PATIENT DOUBLE  
3B13 PATIENT DOUBLE  
3B14 PATIENT DOUBLE  
3C01 PATIENT SINGLE  
3C02 PATIENT SINGLE  
3C04 PATIENT DOUBLE  
3C05 PATIENT DOUBLE  
3C06 PATIENT DOUBLE  
3C07 PATIENT DOUBLE  
3C08 PATIENT SINGLE ADA  
3C09 PATIENT SINGLE ADA  
3C10 PATIENT DOUBLE  
3C11 PATIENT DOUBLE  
3C12 PATIENT DOUBLE  
3C13 PATIENT DOUBLE  
3C14 PATIENT DOUBLE  
3D01 PATIENT SINGLE  
3D02 PATIENT SINGLE  
3D03 PATIENT DOUBLE  
3D04 PATIENT DOUBLE  
3D05 PATIENT DOUBLE  
3D06 PATIENT DOUBLE  
3D07 PATIENT DOUBLE  
3D08 PATIENT SINGLE ADA  
3D09 PATIENT SINGLE ADA  
3D10 PATIENT DOUBLE  
3D11 PATIENT DOUBLE  
3D12 PATIENT DOUBLE  
3D13 PATIENT DOUBLE

## LEVEL 04

### Location

4A01 PATIENT SINGLE  
4A02 PATIENT SINGLE

Project: UTH Continuum of Care Campus  
Project No. 005975.00

Issue Date: 03 MAR 2021  
Revision Date: 05 APR 2021 (2)

4A03 PATIENT DOUBLE  
4A04 PATIENT DOUBLE  
4A05 PATIENT DOUBLE  
4A06 PATIENT DOUBLE  
4A08 PATIENT SINGLE ADA  
4A09 PATIENT SINGLE ADA  
4A10 PATIENT DOUBLE  
4A11 PATIENT DOUBLE  
4A12 PATIENT DOUBLE  
4A13 PATIENT DOUBLE  
4B01 PATIENT SINGLE  
4B02 PATIENT SINGLE  
4B03 PATIENT DOUBLE  
4B04 PATIENT DOUBLE  
4B05 PATIENT DOUBLE  
4B06 PATIENT DOUBLE  
4B07 PATIENT DOUBLE  
4B08 PATIENT SINGLE ADA  
4B09 PATIENT SINGLE ADA  
4B10 PATIENT DOUBLE  
4B11 PATIENT DOUBLE  
4B12 PATIENT DOUBLE  
4B13 PATIENT DOUBLE  
4B14 PATIENT DOUBLE  
4C01 PATIENT SINGLE  
4C02 PATIENT SINGLE  
4C04 PATIENT DOUBLE  
4C05 PATIENT DOUBLE  
4C06 PATIENT DOUBLE  
4C08 PATIENT SINGLE  
4C09 PATIENT SINGLE  
4C10 PATIENT DOUBLE  
4C11 PATIENT DOUBLE  
4C12 PATIENT DOUBLE  
4C13 PATIENT DOUBLE  
4C14 PATIENT DOUBLE  
STC-47 Room

Project: UTH Continuum of Care Campus  
Project No. 005975.00

Issue Date: 03 MAR 2021  
Revision Date: 02 APR 2021 (2)

<b>Manufacturer</b>	Global Furniture
<b>Item Name</b>	Duet
<b>Product Number</b>	6628
<b>Description</b>	Multipurpose stacking chair, upholstered seat, polypropylene shell with handle cut-out, waterfall front edge, solid chrome rod frame
<b>Dimensions</b>	Overall: 20.5"W x 23"D x 33.25"H Seat: 18" 17"D 17"H
<b>Finish</b>	Shell: FIN-22 Base: FIN-23
<b>Upholstery</b>	Seat: UPH-7
<b>Product Options</b>	N/A
<b>Special Instructions</b>	



IMAGE MAY NOT PORTRAY EXACT SPECIFICATIONS

Provide the Following for Review and Assurance of Specification Information:

<b>Plastic Finish</b>	<b>FIN-84</b>
<b>Manufacturer</b>	Global Furniture
<b>Product Name</b>	Plastic Finish
<b>Color</b>	TBD
<b>Product Number</b>	TBD
<b>Special Instructions</b>	

Project: UTH Continuum of Care Campus  
Project No. 005975.00

Issue Date: 03 MAR 2021  
Revision Date: 02 APR 2021 (2)

## Sorano

UPH-7

**Manufacturer** Designtex  
**Product Name** Sorano  
**Product Number** 3403-804  
**Color** Smoky  
**Content** 100% Vinyl  
**Special Instructions** N/A  
**Special Instructions**



## LEVEL 01

### Location

1N30B LOUNGE  
1N40E STUDENT LOUNGE  
1N40F MD LOUNGE  
1N40G RSDNT LOUNGE  
1S23E LOUNGE  
1W26 BOH LOUNGE

## LEVEL 02

### Location

2N09 LOUNGE

## LEVEL 03

### Location

3N09 LOUNGE

## LEVEL 04

### Location

4N09 LOUNGE  
4S41 BREAK ROOM



Project: UTH Continuum of Care Campus  
Project No. 005975.00

Issue Date: 03 MAR 2021  
Revision Date: 05 APR 2021 (2)

<b>Manufacturer</b>	Norix
<b>Item Name</b>	Harmony Lounge
<b>Product Number</b>	LA-1 XXXX-0 XXXX-A XXXX
<b>Description</b>	Fully upholstered lounge chair with clean out and full apron, steel arms & frame with fixed polyurethane arm caps, tamperproof metal seat pan glued to high strength plywood, closed bottom and seat back, molded nylon feet, 130 lbs.
<b>Dimensions</b>	Overall: 31.5"W x 31"D x 32.3"H Seat: 23.5"W x 31"D x 18"H Arm: 25.7"H
<b>Finish</b>	Arm Cap: FIN-4 Feet: FIN-4
<b>Upholstery</b>	UPH-7
<b>Product Options</b>	N/A
<b>Special Instructions</b>	



IMAGE MAY NOT PORTRAY EXACT SPECIFICATIONS

Provide the Following for Review and Assurance of Specification Information:

**Plastic Finish FIN-4**

<b>Manufacturer</b>	Norix
<b>Product Name</b>	Plastic Finish
<b>Color</b>	Raven
<b>Product Number</b>	
<b>Special Instructions</b>	



Project: UTH Continuum of Care Campus  
Project No. 005975.00

Issue Date: 03 MAR 2021  
Revision Date: 05 APR 2021 (2)

## Sorano

UPH-7

**Manufacturer** Designtex  
**Product Name** Sorano  
**Product Number** 3403-804  
**Color** Smoky  
**Content** 100% Vinyl  
**Special Instructions** N/A  
**Special Instructions**



## LEVEL 01

### Location

1N02 LOBBY  
1NC20 SOCIAL ENGAGEMENT  
1NH1 CORRIDOR

## LEVEL 04

### Location

4D04 SOCIAL ENGAGEMENT

Project: UTH Continuum of Care Campus  
Project No. 005975.00

Issue Date: 03 MAR 2021  
Revision Date: 05 APR 2021 (2)

**Manufacturer** Pineapple Contracts

**Item Name** Ryno Dining Chair

**Product Number** 1RYD-00-CG

**Description** Rotationally molded, polyethylene, one-piece dining chair, ballasted (standard 126.5 lbs), recessed footwell, to be weighted 30 lbs.

**Dimensions** Overall: 19.6"W x 24.4"D x 34.6"H  
Seat: 17.7"H

**Finish** FIN-27

**Product Options** N/A

**Special Instructions**



IMAGE MAY NOT PORTRAY EXACT  
SPECIFICATIONS

Provide the Following for Review and Assurance of Specification Information:

**Plastic Finish** FIN-27

**Manufacturer** Pineapple Contracts  
**Product Name** Plastic Finish  
**Color** Cool Green  
**Product Number** CG

**Special Instructions**



## LEVEL 01

**Location**

## LEVEL 02

**Location**

2A01 PATIENT SINGLE

Project: UTH Continuum of Care Campus  
Project No. 005975.00

Issue Date: 03 MAR 2021  
Revision Date: 05 APR 2021 (2)

2A02 PATIENT SINGLE  
2A03 PATIENT DOUBLE  
2A04 PATIENT DOUBLE  
2A05 PATIENT DOUBLE  
2A06 PATIENT DOUBLE  
2A07 PATIENT DOUBLE  
2A08 PATIENT SINGLE ADA  
2A09 PATIENT SINGLE ADA  
2A10 PATIENT DOUBLE  
2A11 PATIENT DOUBLE  
2A12 PATIENT DOUBLE  
2A13 PATIENT DOUBLE  
2A14 PATIENT DOUBLE  
2A19 DAY ROOM  
2A21 DAY ROOM  
2A31 GROUP ROOM  
2AC2 CORRIDOR  
2AC3 CORRIDOR

## LEVEL 03

### Location

3A01 PATIENT SINGLE  
3A02 PATIENT SINGLE  
3A03 PATIENT DOUBLE  
3A04 PATIENT DOUBLE  
3A05 PATIENT DOUBLE  
3A06 PATIENT DOUBLE  
3A07 PATIENT DOUBLE  
3A08 PATIENT SINGLE ADA  
3A09 PATIENT SINGLE ADA  
3A10 PATIENT DOUBLE  
3A11 PATIENT DOUBLE  
3A12 PATIENT DOUBLE  
3A13 PATIENT DOUBLE  
3A14 PATIENT DOUBLE  
3A19 DAY ROOM  
3A21 DAY ROOM  
3A31 GROUP ROOM  
3AC2 CORRIDOR

Project: UTH Continuum of Care Campus  
Project No. 005975.00

Issue Date: 03 MAR 2021  
Revision Date: 05 APR 2021 (2)

3AC3 CORRIDOR

## LEVEL 04

### Location

4A01 PATIENT SINGLE  
4A02 PATIENT SINGLE  
4A03 PATIENT DOUBLE  
4A04 PATIENT DOUBLE  
4A05 PATIENT DOUBLE  
4A06 PATIENT DOUBLE  
4A07 PATIENT DOUBLE  
4A08 PATIENT SINGLE ADA  
4A09 PATIENT SINGLE ADA  
4A10 PATIENT DOUBLE  
4A11 PATIENT DOUBLE  
4A12 PATIENT DOUBLE  
4A13 PATIENT DOUBLE  
4A14 PATIENT DOUBLE  
4A19 DAY ROOM  
4A21 DAY ROOM  
4A31 GROUP ROOM  
4AC2 CORRIDOR  
4AC3 CORRIDOR

Project: UTH Continuum of Care Campus  
Project No. 005975.00

Issue Date: 03 MAR 2021  
Revision Date: 02 APR 2021 (2)

**Manufacturer** Pineapple Contracts

**Item Name** Ryno Dining Chair

**Product Number** 1RYD-00-TG

**Description** Rotationally molded, polyethylene, one-piece dining chair, ballasted (standard 126.5 lbs), recessed footwell, to be weighted 25 lbs.

**Dimensions** Overall: 19.6"W x 24.4"D x 34.6"H  
Seat: 17.7"H

**Finish** FIN-43

**Product Options** N/A

**Special Instructions**



IMAGE MAY NOT PORTRAY EXACT SPECIFICATIONS

Provide the Following for Review and Assurance of Specification Information:

**Plastic Finish** FIN-43

**Manufacturer** Pineapple Contracts  
**Product Name** Plastic Finish  
**Color** Thunder Gray  
**Product Number** TG

**Special Instructions**



## LEVEL 01

### Location

1S15A DINING  
1S15B DINING  
1S15C DINING  
1S15D DINING

Project: UTH Continuum of Care Campus  
Project No. 005975.00

Issue Date: 03 MAR 2021  
Revision Date: 02 APR 2021 (2)

**Manufacturer** Pineapple Contracts

**Item Name** Ryno Dining Chair

**Product Number** 1RYD-00-IP

**Description** Rotationally molded, polyethylene, one-piece dining chair, ballasted (standard 126.5 lbs), recessed footwell, to be weighted 30 lbs.

**Dimensions** Overall: 19.6"W x 24.4"D x 34.6"H  
Seat: 17.7"H

**Finish** FIN-48

**Product Options** N/A

**Special Instructions**



IMAGE MAY NOT PORTRAY EXACT  
SPECIFICATIONS

Provide the Following for Review and Assurance of Specification Information:

**Plastic Finish** FIN-48

**Manufacturer** Pineapple Contracts  
**Product Name** Plastic Finish  
**Color** Icon Purple  
**Product Number** IP

**Special Instructions**



## LEVEL 02

### Location

2D01 PATIENT SINGLE  
2D02 PATIENT SINGLE  
2D03 PATIENT DOUBLE  
2D04 PATIENT DOUBLE

Project: UTH Continuum of Care Campus  
Project No. 005975.00

Issue Date: 03 MAR 2021  
Revision Date: 02 APR 2021 (2)

2D05 PATIENT DOUBLE  
2D06 PATIENT DOUBLE  
2D07 PATIENT DOUBLE  
2D08 PATIENT SINGLE ADA  
2D09 PATIENT SINGLE ADA  
2D10 PATIENT DOUBLE  
2D11 PATIENT DOUBLE  
2D12 PATIENT DOUBLE  
2D13 PATIENT DOUBLE  
2D14 PATIENT DOUBLE  
2D19 DAY ROOM  
2D21 DAY ROOM  
2D31 GROUP ROOM  
2DC2 CORRIDOR  
2DC3 CORRIDOR

## LEVEL 03

### Location

3D01 PATIENT SINGLE  
3D02 PATIENT SINGLE  
3D03 PATIENT DOUBLE  
3D04 PATIENT DOUBLE  
3D05 PATIENT DOUBLE  
3D06 PATIENT DOUBLE  
3D07 PATIENT DOUBLE  
3D08 PATIENT SINGLE ADA  
3D09 PATIENT SINGLE ADA  
3D10 PATIENT DOUBLE  
3D11 PATIENT DOUBLE  
3D12 PATIENT DOUBLE  
3D13 PATIENT DOUBLE  
3D14 PATIENT DOUBLE  
3D19 DAY ROOM  
3D21 DAY ROOM  
3D31 GROUP ROOM  
3DC2 CORRIDOR  
3DC3 CORRIDOR



Project: UTH Continuum of Care Campus  
Project No. 005975.00

Issue Date: 03 MAR 2021  
Revision Date: 02 APR 2021 (2)

**Manufacturer** Pineapple Contracts

**Item Name** Ryno Dining Chair

**Product Number** 1RYD-00-EB

**Description** Rotationally molded, polyethylene, one-piece dining chair, ballasted (standard 126.5 lbs), recessed footwell, to be weighted 30 lbs.

**Dimensions** Overall: 19.6"W x 24.4"D x 34.6"H  
Seat: 17.7"H

**Finish** FIN-47

**Product Options** N/A

**Special Instructions**



IMAGE MAY NOT PORTRAY EXACT SPECIFICATIONS

Provide the Following for Review and Assurance of Specification Information:

**Plastic Finish FIN-47**

**Manufacturer** Pineapple Contracts  
**Product Name** Plastic Finish  
**Color** Epic Blue  
**Product Number** EB

**Special Instructions**



## LEVEL 02

**Location**

2C01 PATIENT SINGLE  
2C02 PATIENT SINGLE  
2C03 PATIENT DOUBLE  
2C04 PATIENT DOUBLE

Project: UTH Continuum of Care Campus  
Project No. 005975.00

Issue Date: 03 MAR 2021  
Revision Date: 02 APR 2021 (2)

2C05 PATIENT DOUBLE  
2C06 PATIENT DOUBLE  
2C07 PATIENT DOUBLE  
2C08 PATIENT SINGLE ADA  
2C09 PATIENT SINGLE ADA  
2C10 PATIENT DOUBLE  
2C11 PATIENT DOUBLE  
2C12 PATIENT DOUBLE  
2C13 PATIENT DOUBLE  
2C14 PATIENT DOUBLE  
2C19 DAY ROOM  
2C21 DAY ROOM  
2C31 GROUP ROOM  
2CC2 CORRIDOR  
2CC3 CORRIDOR

## LEVEL 03

### Location

3C01 PATIENT SINGLE  
3C02 PATIENT SINGLE  
3C03 PATIENT DOUBLE  
3C04 PATIENT DOUBLE  
3C05 PATIENT DOUBLE  
3C06 PATIENT DOUBLE  
3C07 PATIENT DOUBLE  
3C08 PATIENT SINGLE ADA  
3C09 PATIENT SINGLE ADA  
3C10 PATIENT DOUBLE  
3C11 PATIENT DOUBLE  
3C12 PATIENT DOUBLE  
3C13 PATIENT DOUBLE  
3C14 PATIENT DOUBLE  
3C19 DAY ROOM  
3C21 DAY ROOM  
3C31 GROUP ROOM  
3CC2 CORRIDOR  
3CC3 CORRIDOR

## LEVEL 04

### Location

Project: UTH Continuum of Care Campus  
Project No. 005975.00

Issue Date: 03 MAR 2021  
Revision Date: 02 APR 2021 (2)

4C01 PATIENT SINGLE  
4C02 PATIENT SINGLE  
4C03 PATIENT DOUBLE  
4C04 PATIENT DOUBLE  
4C05 PATIENT DOUBLE  
4C06 PATIENT DOUBLE  
4C08 PATIENT SINGLE  
4C09 PATIENT SINGLE  
4C10 PATIENT DOUBLE  
4C11 PATIENT DOUBLE  
4C12 PATIENT DOUBLE  
4C13 PATIENT DOUBLE  
4C14 PATIENT DOUBLE  
4C19 DAY ROOM  
4C21 DAY ROOM  
4C31 GROUP ROOM  
4CC2 CORRIDOR  
4CC3 CORRIDOR  
STC-47 Room

Project: UTH Continuum of Care Campus  
Project No. 005975.00

Issue Date: 03 MAR 2021  
Revision Date: 05 APR 2021 (2)

**Manufacturer** Pineapple Contracts

**Item Name** Ryno Dining Chair

**Product Number** 1RYD-00-MG

**Description** Rotationally molded, polyethylene, one-piece dining chair, ballasted (standard 126.5 lbs), recessed footwell, to be weighted 30 lbs.

**Dimensions** Overall: 19.6"W x 24.4"D x 34.6"H  
Seat: 17.7"H

**Finish** FIN-76

**Product Options** N/A

**Special Instructions**



IMAGE MAY NOT PORTRAY EXACT  
SPECIFICATIONS

Provide the Following for Review and Assurance of Specification Information:

**Plastic Finish FIN-76**

**Manufacturer** Pineapple Contracts

**Product Name** Plastic Finish

**Color** Moonwalk Grey

**Product Number** MG

**Special Instructions**



## LEVEL 01

### Location

1N20A MUSIC THER.  
1N20D THERAPY ROOM  
1N20E THERAPY ROOM  
1N20N ACTIVITY ROOM

Project: UTH Continuum of Care Campus  
Project No. 005975.00

Issue Date: 03 MAR 2021  
Revision Date: 05 APR 2021 (2)

**LEVEL 02**

**Location**

---

2B01 PATIENT SINGLE  
2B02 PATIENT SINGLE  
2B03 PATIENT DOUBLE  
2B04 PATIENT DOUBLE  
2B05 PATIENT DOUBLE  
2B06 PATIENT DOUBLE  
2B07 PATIENT DOUBLE  
2B08 PATIENT SINGLE ADA  
2B09 PATIENT SINGLE ADA  
2B10 PATIENT DOUBLE  
2B11 PATIENT DOUBLE  
2B12 PATIENT DOUBLE  
2B13 PATIENT DOUBLE  
2B14 PATIENT DOUBLE  
2B19 DAY ROOM  
2B21 DAY ROOM  
2B31 GROUP ROOM  
2BC2 CORRIDOR  
2BC3 CORRIDOR

**LEVEL 03**

**Location**

---

3B01 PATIENT SINGLE  
3B02 PATIENT SINGLE  
3B03 PATIENT DOUBLE  
3B04 PATIENT DOUBLE  
3B05 PATIENT DOUBLE  
3B06 PATIENT DOUBLE  
3B07 PATIENT DOUBLE  
3B08 PATIENT SINGLE ADA  
3B09 PATIENT SINGLE ADA  
3B10 PATIENT DOUBLE  
3B11 PATIENT DOUBLE  
3B12 PATIENT DOUBLE  
3B13 PATIENT DOUBLE  
3B14 PATIENT DOUBLE  
3B19 DAY ROOM

Project: UTH Continuum of Care Campus  
Project No. 005975.00

Issue Date: 03 MAR 2021  
Revision Date: 05 APR 2021 (2)

3B21 DAY ROOM  
3B31 GROUP ROOM  
3BC2 CORRIDOR  
3BC3 CORRIDOR

## LEVEL 04

### Location

4B01 PATIENT SINGLE  
4B02 PATIENT SINGLE  
4B03 PATIENT DOUBLE  
4B04 PATIENT DOUBLE  
4B05 PATIENT DOUBLE  
4B06 PATIENT DOUBLE  
4B07 PATIENT DOUBLE  
4B08 PATIENT SINGLE ADA  
4B09 PATIENT SINGLE ADA  
4B10 PATIENT DOUBLE  
4B11 PATIENT DOUBLE  
4B12 PATIENT DOUBLE  
4B13 PATIENT DOUBLE  
4B14 PATIENT DOUBLE  
4B19 DAY ROOM  
4B21 DAY ROOM  
4B31 GROUP ROOM  
4BC2 CORRIDOR  
4BC3 CORRIDOR

Project: UTH Continuum of Care Campus  
Project No. 005975.00

Issue Date: 03 MAR 2021  
Revision Date: 05 APR 2021 (2)

<b>Manufacturer</b>	ERG International
<b>Item Name</b>	Ojai - Lounge Chair
<b>Product Number</b>	3011
<b>Description</b>	Fully upholstered lounge chair with polyurethane arm caps, solid frame and legs, clean out, four black polyvinyl glides factory installed
<b>Dimensions</b>	Overall: 28"W x 27"D x 32.5"H Seat: 22"W x 20"D x 18"H Arm: 25.5"H
<b>Finish</b>	Arm Caps: FIN-81 Legs: FIN-81
<b>Upholstery</b>	Back: UPH-18 Seat/Surround: UPH-17
<b>Product Options</b>	N/A
<b>Special Instructions</b>	



IMAGE MAY NOT PORTRAY EXACT SPECIFICATIONS

Provide the Following for Review and Assurance of Specification Information:

## Plastic Finish FIN-81

<b>Manufacturer</b>	ERG International
<b>Product Name</b>	Plastic Finish
<b>Color</b>	Charcoal
<b>Product Number</b>	N/A

## Special Instructions



Project: UTH Continuum of Care Campus  
Project No. 005975.00

Issue Date: 03 MAR 2021  
Revision Date: 05 APR 2021 (2)

## Hyde UPH-17

**Manufacturer** Designtex  
**Product Name** Hyde  
**Product Number** 3888-801  
**Color** Smoke  
**Content** 100% Vinyl  
**Special Instructions** N/A  
**Special Instructions**



## Apollo UPH-18

**Manufacturer** ArcCom Fabrics  
**Product Name** Apollo  
**Product Number** AC-63350  
**Color** Stone  
**Content** Crypton  
**Special Instructions** N/A  
**Special Instructions**



## LEVEL 01

### Location

1S22J WAITING  
1SC20 CORRIDOR  
1SC21 WAITING  
1SC24 CORRIDOR



Project: UTH Continuum of Care Campus  
Project No. 005975.00

Issue Date: 03 MAR 2021  
Revision Date: 05 APR 2021 (2)

<b>Manufacturer</b>	ERG International
<b>Item Name</b>	Ojai - Lounge Chair
<b>Product Number</b>	3011
<b>Description</b>	Fully upholstered lounge chair with polyurethane arm caps, solid frame and legs, clean out, four black polyvinyl glides factory installed
<b>Dimensions</b>	Overall: 28"W x 27"D x 32.5"H Seat: 22"W x 20"D x 18"H Arm: 25.5"H
<b>Finish</b>	Arm Caps: FIN-81 Legs: FIN-81
<b>Upholstery</b>	Back: UPH-10 Seat/Surround: UPH-7
<b>Product Options</b>	N/A
<b>Special Instructions</b>	



IMAGE MAY NOT PORTRAY EXACT SPECIFICATIONS

Provide the Following for Review and Assurance of Specification Information:

## Plastic Finish FIN-81

<b>Manufacturer</b>	ERG International
<b>Product Name</b>	Plastic Finish
<b>Color</b>	Charcoal
<b>Product Number</b>	N/A

## Special Instructions



Project: UTH Continuum of Care Campus  
Project No. 005975.00

Issue Date: 03 MAR 2021  
Revision Date: 05 APR 2021 (2)

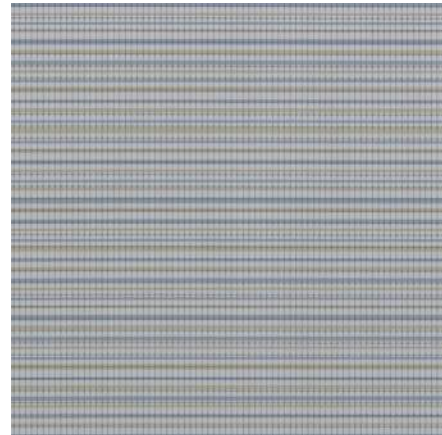
## Sorano UPH-7

**Manufacturer** Designtex  
**Product Name** Sorano  
**Product Number** 3403-804  
**Color** Smoky  
**Content** 100% Vinyl  
**Special Instructions** N/A  
**Special Instructions**



## Scute UPH-10

**Manufacturer** Maharam  
**Product Name** Scute  
**Product Number** 466396-010  
**Color** Dew  
**Content** 100% Vinyl  
**Special Instructions** N/A  
**Special Instructions**



## LEVEL 01

### Location

1N40E STUDENT LOUNGE  
1N40F MD LOUNGE  
1N40G RSDNT LOUNGE

Project: UTH Continuum of Care Campus  
Project No. 005975.00

Issue Date: 03 MAR 2021  
Revision Date: 05 APR 2021 (2)

<b>Manufacturer</b>	ERG International
<b>Item Name</b>	Ojai - Lounge Chair
<b>Product Number</b>	3011
<b>Description</b>	Fully upholstered lounge chair with polyurethane arm caps, solid frame and legs, clean out, four black polyvinyl glides factory installed
<b>Dimensions</b>	Overall: 28"W x 27"D x 32.5"H Seat: 22"W x 20"D x 18"H Arm: 25.5"H
<b>Finish</b>	Arm Caps: FIN-81 Legs: FIN-81
<b>Upholstery</b>	Back: UPH-19 Seat/Surround: UPH-17
<b>Product Options</b>	N/A
<b>Special Instructions</b>	



IMAGE MAY NOT PORTRAY EXACT SPECIFICATIONS

Provide the Following for Review and Assurance of Specification Information:

## Plastic Finish FIN-81

<b>Manufacturer</b>	ERG International
<b>Product Name</b>	Plastic Finish
<b>Color</b>	Charcoal
<b>Product Number</b>	N/A

## Special Instructions



Project: UTH Continuum of Care Campus  
Project No. 005975.00

Issue Date: 03 MAR 2021  
Revision Date: 05 APR 2021 (2)

## Hyde UPH-17

**Manufacturer** Designtex  
**Product Name** Hyde  
**Product Number** 3888-801  
**Color** Smoke  
**Content** 100% Vinyl  
**Special Instructions** N/A  
**Special Instructions**



## Clamber UPH-19

**Manufacturer** Maharam  
**Product Name** Clamber  
**Product Number** 466385-005  
**Color** Sandy  
**Content** 100% Polyester  
**Special Instructions** N/A  
**Special Instructions**



## LEVEL 01

### Location

1S22J WAITING

1SC24 CORRIDOR

Project: UTH Continuum of Care Campus  
Project No. 005975.00

Issue Date: 03 MAR 2021  
Revision Date: 05 APR 2021 (2)

<b>Manufacturer</b>	ERG International
<b>Item Name</b>	Ojai - Lounge Chair
<b>Product Number</b>	3011
<b>Description</b>	Fully upholstered lounge chair with polyurethane arm caps, solid frame and legs, clean out, four black polyvinyl glides factory installed
<b>Dimensions</b>	Overall: 28"W x 27"D x 32.5"H Seat: 22"W x 20"D x 18"H Arm: 25.5"H
<b>Finish</b>	Arm Caps: FIN-81 Legs: FIN-81
<b>Upholstery</b>	Surround/Back: UPH-14 Seat: UPH-16
<b>Product Options</b>	N/A
<b>Special Instructions</b>	



IMAGE MAY NOT PORTRAY EXACT SPECIFICATIONS

Provide the Following for Review and Assurance of Specification Information:

## Plastic Finish FIN-81

<b>Manufacturer</b>	ERG International
<b>Product Name</b>	Plastic Finish
<b>Color</b>	Charcoal
<b>Product Number</b>	N/A
<b>Special Instructions</b>	



Project: UTH Continuum of Care Campus  
Project No. 005975.00

Issue Date: 03 MAR 2021  
Revision Date: 05 APR 2021 (2)

## Adele

UPH-14

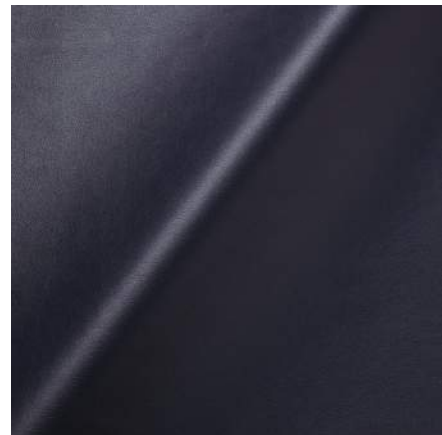
**Manufacturer** Pallas  
**Product Name** Adele  
**Product Number** 27.243.094  
**Color** Midnight  
**Content** 66% Polyester, 34% Solution-Dyed Nylon  
**Special Instructions** N/A  
**Special Instructions**



## Juggernaut

UPH-16

**Manufacturer** Pallas  
**Product Name** Juggernaut  
**Product Number** 27.239.154  
**Color** Blueberry  
**Content** 100% Polyurethane  
**Special Instructions** N/A  
**Special Instructions**



## LEVEL 01

### Location

1W04 PREFUNCTION

1WH1 CORRIDOR

Project: UTH Continuum of Care Campus  
Project No. 005975.00

Issue Date: 03 MAR 2021  
Revision Date: 05 APR 2021 (2)

<b>Manufacturer</b>	ERG International
<b>Item Name</b>	Ojai - Lounge Chair
<b>Product Number</b>	3011
<b>Description</b>	Fully upholstered lounge chair with polyurethane arm caps, solid frame and legs, clean out, four black polyvinyl glides factory installed
<b>Dimensions</b>	Overall: 28"W x 27"D x 32.5"H Seat: 22"W x 20"D x 18"H Arm: 25.5"H
<b>Finish</b>	Arm Caps: FIN-81 Legs: FIN-81
<b>Upholstery</b>	Surround/Back: UPH-15 Seat: UPH-16
<b>Product Options</b>	N/A
<b>Special Instructions</b>	



IMAGE MAY NOT PORTRAY EXACT SPECIFICATIONS

Provide the Following for Review and Assurance of Specification Information:

<b>Plastic Finish</b>	<b>FIN-81</b>
<b>Manufacturer</b>	ERG International
<b>Product Name</b>	Plastic Finish
<b>Color</b>	Charcoal
<b>Product Number</b>	N/A
<b>Special Instructions</b>	



Project: UTH Continuum of Care Campus  
Project No. 005975.00

Issue Date: 03 MAR 2021  
Revision Date: 05 APR 2021 (2)

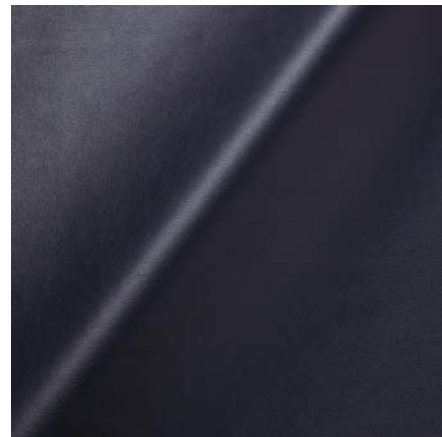
## Stereo Stripe UPH-15

**Manufacturer** Pallas  
**Product Name** Stereo Stripe  
**Product Number** 27.195.073  
**Color** Sonic Blue  
**Content** 53% Polyester, 47% Solution Dyed Nylon  
**Special Instructions** N/A  
**Special Instructions**



## Juggernaut UPH-16

**Manufacturer** Pallas  
**Product Name** Juggernaut  
**Product Number** 27.239.154  
**Color** Blueberry  
**Content** 100% Polyurethane  
**Special Instructions** N/A  
**Special Instructions**



## LEVEL 01

### Location

1W04 PREFUNCTION



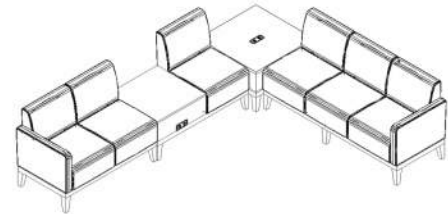
Project: UTH Continuum of Care Campus  
Project No. 005975.00

Issue Date: 03 MAR 2021  
Revision Date: 05 APR 2021 (2)

**Manufacturer** ERG International

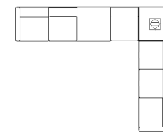
**Item Name** Ojai - Modular Seating

**Product Number** Right Arm Lounge: 3097/GD2  
Lounge w/ Table: SP/3090/GD2/ELEC/AH-L/AH-U  
Three Seat Lounge w/ Left Arm: SP/3013/GD2  
Occasional Table: OJA3030/GD2/ELEC/AH-L  
(3) Ganging Device: GD-2  
(2) Power/Data: COV-22U-S-108



**Description** Modular lounge unit containing fully upholstered two seat lounge chair with right arm, fully upholstered lounge chair with no arm and laminate on-line table, fully upholstered three seat lounge with left arm only, laminate occasional table, (1) cove power/data receptacle with 2 simplex outlets and 2 USB installed on top of occasional table; (1) cove power/data receptacle with 2 simplex outlets and 2 USB outlets installed on side of on-line table, daisy chain, ganging brackets, clean out in all seats, solid frame and legs, polyvinyl glides factory installed, polyurethane arm caps

IMAGE MAY NOT PORTRAY EXACT SPECIFICATIONS



**Dimensions** Overall: 124"W x 99"D x 32.5"H  
Right Arm Lounge: 46"W x 25"D x 32.5"H  
Lounge w/ On-Line Table: 47"W x 25"D x 32.5"H  
Three Seat Lounge w/ Left Arm: 68-3/8"W x 25"D x 32.5"H  
Occasional Table: 30"W x 30"D x 18"H  
Power Receptacle: 5.75"W x 2.5"D

**Finish** Arm Caps: FIN-81  
Table Surface/Edge: FIN-63  
Legs: FIN-81  
Power Receptacle:

**Upholstery** UPH-16

**Product Options** N/A

**Special Instructions**

Provide the Following for Review and Assurance of Specification Information:

Project: UTH Continuum of Care Campus  
Project No. 005975.00

Issue Date: 03 MAR 2021  
Revision Date: 05 APR 2021 (2)

## Laminate FIN-63

**Manufacturer** Wilsonart  
**Product Name** Laminate  
**Color** Kensington Maple  
**Product Number** 10776-60  
**Special Instructions**



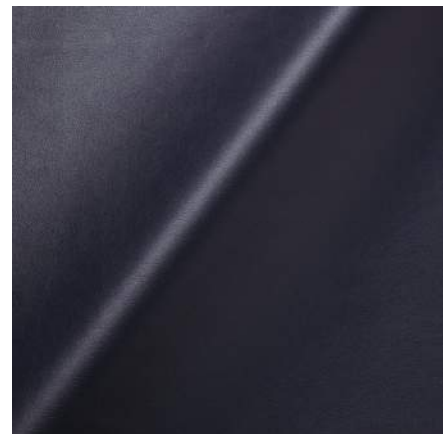
## Plastic Finish FIN-81

**Manufacturer** ERG International  
**Product Name** Plastic Finish  
**Color** Charcoal  
**Product Number** N/A  
**Special Instructions**



## Juggernaut UPH-16

**Manufacturer** Pallas  
**Product Name** Juggernaut  
**Product Number** 27.239.154  
**Color** Blueberry  
**Content** 100% Polyurethane  
**Special Instructions** N/A  
**Special Instructions**



Project: UTH Continuum of Care Campus  
Project No. 005975.00

Issue Date: 03 MAR 2021  
Revision Date: 05 APR 2021 (2)

---

## LEVEL 01

### Location

---

1 W04 PREFUNCTION

Project: UTH Continuum of Care Campus  
Project No. 005975.00

Issue Date: 03 MAR 2021  
Revision Date: 05 APR 2021 (2)

**Manufacturer** ERG International

**Item Name** Ojai - Sofa

**Product Number** 3013

**Description** Fully upholstered, three seat lounge with two outside arms with polyurethane arm caps, solid frame and legs, clean out, polyvinyl glides factory installed

**Dimensions** Overall: 72"W x 27"D x 25.5"H  
Seat: 22"W x 20"D x 18"H  
Arm: 25.5"H

**Finish** Arm Cap: FIN-81  
Base: FIN-81

**Upholstery** UPH-17

**Product Options** N/A

**Special Instructions**



IMAGE MAY NOT PORTRAY EXACT  
SPECIFICATIONS

Provide the Following for Review and Assurance of Specification Information:

**Plastic Finish** FIN-81

**Manufacturer** ERG International

**Product Name** Plastic Finish

**Color** Charcoal

**Product Number** N/A

**Special Instructions**



Project: UTH Continuum of Care Campus  
Project No. 005975.00

Issue Date: 03 MAR 2021  
Revision Date: 05 APR 2021 (2)

## Hyde

UPH-17

**Manufacturer**      Designtex  
**Product Name**      Hyde  
**Product Number**    3888-801  
**Color**                Smoke  
**Content**              100% Vinyl  
**Special Instructions**   N/A  
**Special Instructions**



## LEVEL 01

### Location

1N40G RSDNT LOUNGE

1SC21 WAITING

Project: UTH Continuum of Care Campus  
Project No. 005975.00

Issue Date: 03 MAR 2021  
Revision Date: 05 APR 2021 (2)

**Manufacturer** OFS

**Item Name** Modern Amenity Glider

**Product Number** 1616A8TAD1P

**Description** Fully upholstered glider with polyurethane arm caps, locking knob, glider mechanism to allow for front to back movement, locking knob for transportation, plastic glides, clean-thru design

**Dimensions** Overall: 26.5"W x 27.25"D x 39.25"H  
Seat: 21"W x 19.75"D x 19.5"H  
Arm: 26.5"H

**Finish** Arm Cap: FIN-69

**Upholstery** UPH-6

**Product Options** N/A

**Special Instructions**



Provide the Following for Review and Assurance of Specification Information:

## Arm Cap Finish FIN-69

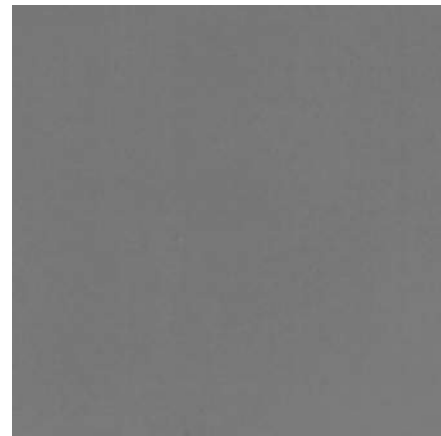
**Manufacturer** OFS

**Product Name** Arm Cap Finish

**Color** Taupe

**Product Number** D1M

**Special Instructions**



Project: UTH Continuum of Care Campus

Project No. 005975.00

Issue Date: 03 MAR 2021

Revision Date: 05 APR 2021 (2)

<b>Festoon</b>	<b>UPH-6</b>
<b>Manufacturer</b>	Maharam
<b>Product Name</b>	Festoon
<b>Product Number</b>	466525-002
<b>Color</b>	Melee
<b>Content</b>	100% Non-Phthalate Vinyl
<b>Special Instructions</b>	N/A
<b>Special Instructions</b>	



## LEVEL 01

### Location

1N38 LACTATION

Project: UTH Continuum of Care Campus  
Project No. 005975.00

Issue Date: 03 MAR 2021  
Revision Date: 05 APR 2021 (2)

<b>Manufacturer</b>	Bernhardt Design
<b>Item Name</b>	Mitt Lounge
<b>Product Number</b>	5721
<b>Description</b>	Mobile lounge chair with standard stitch - . Four weight-activated self-locking casters.
<b>Dimensions</b>	33-1/2"W x 33-1/2"D x 32"H Seat Height: 16-1/2"
<b>Finish</b>	N/A
<b>Upholstery</b>	TBD GRADE 7
<b>Product Options</b>	N/A
<b>Special Instructions</b>	



IMAGE MAY NOT PORTRAY EXACT  
SPECIFICATIONS

Provide the Following for Review and Assurance of Specification Information:

## LEVEL 01

### Location

1N20N ACTIVITY ROOM



Project: UTH Continuum of Care Campus  
Project No. 005975.00

Issue Date: 03 MAR 2021  
Revision Date: 05 APR 2021 (2)

**Manufacturer** Knoll

**Item Name** Private Office - L-Shape

**Product Number**

Stiffner: AWM1S60  
Cable Management: D1WB26  
LED Undercabinet Light: LED1IN37-SLV  
Cores/Keys: KSPEC4MS  
Cushion: QAS11J803-K22617  
Bracket: R113B  
Modesty Panel: RBDH54MF-139  
Top to Top Bracket: RBF  
12W End Panel REDH12F-139  
23W End Panel: REDH23F-139  
Mobile Pedestal: RM112J-139-139-MF613LS  
D-Top Worksurface: RMDA7230-PC-613-139-139  
Rectangular Worksurface: RSA482-CF-613-139-139  
Mid-Span Cantilever Bracket: RMSB-P3-613  
Hutch, Single High Case: ROHSHC781D-H-139-139-F613LS  
Hutch, Single Hight Surround: ROHSHS781D-HAN-139-W16107  
Pedestal Back: RPDHB16-139  
Pencil Tray: RPETRAY3N  
Utility Bracket: RUTB

**Description**

D-Top laminate worksurface with edge to match, grommet in center location, no top cap profile required; (2) end panels, flush/cantilevered; worksurface cable management  
Modesty panel, flush cantilevered  
R seated return, rectangular laminate worksurface with edge to match, classic grommet in center  
LED undercabinet light  
Reff box/file laminate mobile pedestal with upholstered cushion top  
Locking, single height hinged door hutch with concealed cubby  
Tackboard  
Single height hutch surround for hinged door unit  
Pedestal, file/file, flush base  
Pencil tray, black  
Set of 4 cores/keys, matte silver

**Finish**

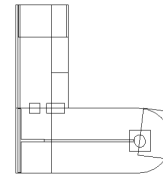
Worksurface/Modesty Panel/End Panel: FIN-44  
Mobile Pedestal: FIN-44  
Hutch: FIN-44  
Grommets/Metal: FIN-45

**Upholstery**

Mobile Pedestal Cushion: UPH-11  
Tackboard: UPH-12



IMAGE MAY NOT PORTRAY EXACT SPECIFICATIONS



Project: UTH Continuum of Care Campus  
Project No. 005975.00

Issue Date: 03 MAR 2021  
Revision Date: 05 APR 2021 (2)

**Dimensions**

Overall: 72-5/8"W x 78"D x 72"H  
D-Top Worksurface: 72"W x 30"D x 29"H  
Return, Rectangular Worksurface: 48"W x 24"D x 29"H  
Mobile Pedestal: 16"W x 23"D x 21"H  
Pedestal: 16"W x 23"D x 28-3/8"H  
Modesty Panel: 54"W x 28-3/8"H  
End Panel: 12"W x 28-3/8"H  
End Panel: 23"W x 28-3/8"H

**Product Options** N/A

## Special Instructions

1. Keyed alike per seated position.

Provide the Following for Review and Assurance of Specification Information:

## Laminate FIN-44

**Manufacturer** Knoll  
**Product Name** Laminate  
**Color** Light Ash  
**Product Number** 139

## Special Instructions



## Metal Finish FIN-45

**Manufacturer** Knoll  
**Product Name** Metal Finish  
**Color** Silver, Smooth  
**Product Number** 613

## Special Instructions



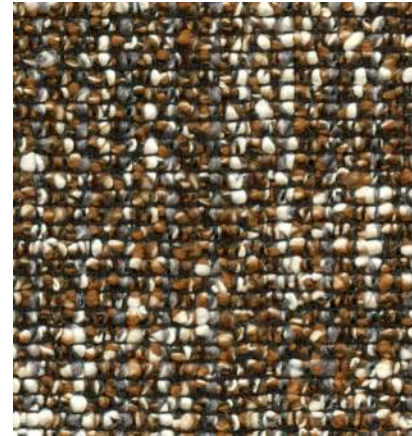
Project: UTH Continuum of Care Campus  
Project No. 005975.00

Issue Date: 03 MAR 2021  
Revision Date: 05 APR 2021 (2)

## Rebel

UPH-11

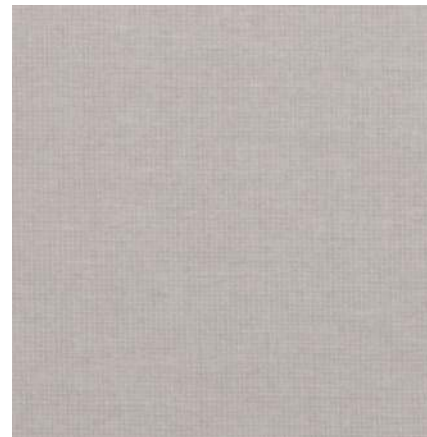
**Manufacturer** Knoll Textiles  
**Product Name** Rebel  
**Product Number** #K22617  
**Color** Cat's Eye  
**Content** 53% Cotton, 24% Polyester, 19% Acrylic, 4% Nylon  
**Special Instructions** N/A  
**Special Instructions**



## Element

UPH-12

**Manufacturer** Knoll Textiles  
**Product Name** Element  
**Product Number** #W107710  
**Color** Silver  
**Content** 100% Polyester  
**Special Instructions** N/A  
**Special Instructions**



## LEVEL 01

### Location

1N25A OFFICE  
1S22B FINANCIAL OPS  
1S26A OPEN OFFICE  
1S26C OPEN OFFICE  
1S27B MARKETING / PR  
1S27D RESEARCH DIRECTOR  
1S27F CNO  
1S27J NURSE MANAGER  
1S27K NURSE MANAGER  
1W10C OFFICE

## LEVEL 02

Project: UTH Continuum of Care Campus  
Project No. 005975.00

Issue Date: 03 MAR 2021  
Revision Date: 05 APR 2021 (2)

---

**Location**

2N06 OFFICE  
2N07 OFFICE  
2N11 OFFICE  
2N12 OFFICE  
2N14 OFFICE  
2N15 OFFICE  
2S06 OFFICE  
2S07 OFFICE  
2S11 OFFICE  
2S14 OFFICE  
2S15 OFFICE

**LEVEL 03**

---

**Location**

3N06 OFFICE  
3N07 OFFICE  
3N11 OFFICE  
3N12 OFFICE  
3N14 OFFICE  
3N15 OFFICE  
3S06 OFFICE  
3S07 OFFICE  
3S09 RT SHARED OFFICE  
3S11 OFFICE  
3S14 OFFICE  
3S15 OFFICE

**LEVEL 04**

---

**Location**

4N06 OFFICE  
4N14 OFFICE  
4N15 OFFICE  
4S06 OFFICE  
4S11 OFFICE  
4S15 OFFICE  
4S16 OFFICE  
4S19 OFFICE  
4S21 OFFICE

Project: UTH Continuum of Care Campus  
Project No. 005975.00

Issue Date: 03 MAR 2021  
Revision Date: 05 APR 2021 (2)

4S24 OFFICE  
4S26 OFFICE  
4S29 OFFICE  
4S31 OFFICE  
4S34 OFFICE  
4S36 OFFICE  
4S39 OFFICE

Project: UTH Continuum of Care Campus  
Project No. 005975.00

Issue Date: 03 MAR 2021  
Revision Date: 05 APR 2021 (2)

**Manufacturer** Knoll

**Item Name** Private Office Rectangular Desk

**Product Number**

Stiffener: AWM1S72  
Undercabinet Light: LED2IN37-SLV  
Pedestal, Back: RPDHB16-139  
Pedestal, Box/Box/File: RP162J-139-139-MF613LS  
Hutch, Surround: ROHSHS7-21DHAF-139-W107710  
Hutch, Case: ROHSHC7-21DH-139-139-F-613-L-S  
Worksurface, 48"W: RSA482-PF-613-139-139  
Worksurface, 72"W: RSA723-PF-613-139-139  
Top to Top Bracket: RBF  
L-Base: RSDHL30-139  
Cable Management Basket, 25-1/2": D1WB26  
Cable Management Basket, 35": D1WB36  
Set of 3 Cores/Keys: KSPEC3MS

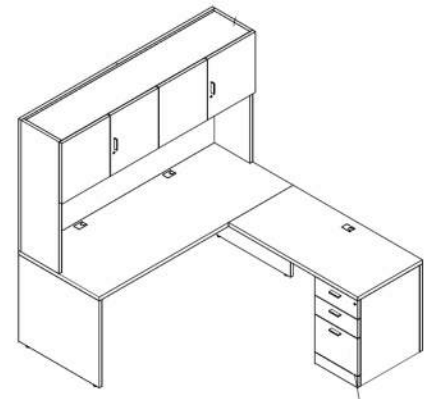


IMAGE MAY NOT PORTRAY EXACT SPECIFICATIONS

**Description**

(2) Rectangular laminate worksurface with edge to match, profiles grommet in flush location, L seated return  
(2) end panels, flush/cantilevered; (2) worksurface cable management baskets  
Modesty panel, flush cantilevered  
LED undercabinet light  
Pedestal, box/box/file, laminate  
L-Base, laminate  
Locking, single height hinged door hutch with concealed cubby  
Tackboard  
Single height hutch surround for hinged door unit  
Pedestal, file/file, flush base, pedestal back  
Set of 3 cores/keys, matte silver

**Finish**

Worksurface: FIN-44  
Pedestal: FIN-44  
Tackboard: UPH-12  
Grommets/Locks: FIN-45

**Dimensions**

Overall: 72"W x 78"D x 72"H  
Worksurface: 48"W x 24"D x 1-1/4"H  
Worksurface: 72"W x 30"D x 1-1/4"H  
Pedestal: 16"W x 23"D x 28-3/4"H  
Hutch, Surround: 72"W x 15"D x 43"H  
Hutch, Case: 72"W x 15"D x 20"H

**Product Options** N/A

**Special Instructions**

Project: UTH Continuum of Care Campus  
Project No. 005975.00

Issue Date: 03 MAR 2021  
Revision Date: 05 APR 2021 (2)

## Laminate FIN-44

**Manufacturer** Knoll  
**Product Name** Laminate  
**Color** Light Ash  
**Product Number** 139

**Special Instructions**



## Metal Finish FIN-45

**Manufacturer** Knoll  
**Product Name** Metal Finish  
**Color** Silver, Smooth  
**Product Number** 613

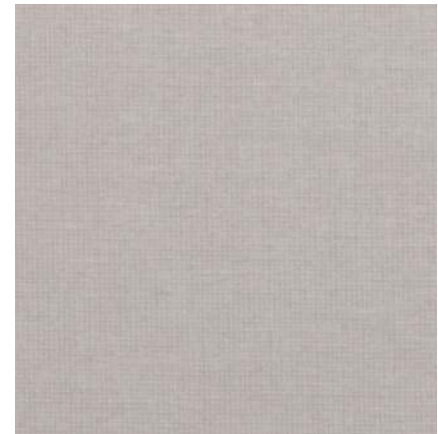
**Special Instructions**



## Element UPH-12

**Manufacturer** Knoll Textiles  
**Product Name** Element  
**Product Number** #W107710  
**Color** Silver  
**Content** 100% Polyester  
**Special Instructions** N/A

**Special Instructions**



Project: UTH Continuum of Care Campus  
Project No. 005975.00

Issue Date: 03 MAR 2021  
Revision Date: 05 APR 2021 (2)

---

**LEVEL 01**

**Location**

---

1N35C OFFICE



Project: UTH Continuum of Care Campus  
Project No. 005975.00

Issue Date: 03 MAR 2021  
Revision Date: 05 APR 2021 (2)

**Manufacturer** Knoll

**Item Name** Private Office Rectangular Desk

**Product Number**

Stiffener: AWM1S72  
Undercabinet Light: LED2IN37-SLV  
Pedestal, Back: RPDHB16-139  
Pedestal, Box/Box/File: RP162J-139-139-MF613LS  
Hutch, Surround: ROHSHS7-21DHAF-139-W107710  
Hutch, Case: ROHSHC7-21DH-139-139-F-613-L-S  
Worksurface, 48"W: RSA482-PF-613-139-139  
Worksurface, 72"W: RSA723-PF-613-139-139  
Top to Top Bracket: RBF  
L-Base: RSDHL30-139  
Cable Management Basket, 25-1/2": D1WB26  
Cable Management Basket, 35": D1WB36  
Set of 3 Cores/Keys: KSPEC3MS

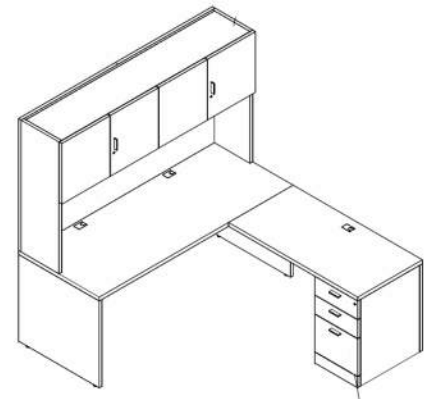


IMAGE MAY NOT PORTRAY EXACT SPECIFICATIONS

**Description**

(2) Rectangular laminate worksurface with edge to match, profiles grommet in flush location, R seated return  
(2) end panels, flush/cantilevered; (2) worksurface cable management baskets  
Modesty panel, flush cantilevered  
LED undercabinet light  
Pedestal, box/box/file, laminate  
L-Base, laminate  
Locking, single height hinged door hutch with concealed cubby  
Tackboard  
Single height hutch surround for hinged door unit  
Pedestal, file/file, flush base, pedestal back  
Set of 3 cores/keys, matte silver

**Finish**

Worksurface: FIN-44  
Pedestal: FIN-44  
Tackboard: UPH-12  
Grommets/Locks: FIN-45

**Dimensions**

Overall: 72"W x 78"D x 72"H  
Worksurface: 48"W x 24"D x 1-1/4"H  
Worksurface: 72"W x 30"D x 1-1/4"H  
Pedestal: 16"W x 23"D x 28-3/4"H  
Hutch, Surround: 72"W x 15"D x 43"H  
Hutch, Case: 72"W x 15"D x 20"H

**Product Options** N/A

### Special Instructions

1. Keyed alike per seated position.

Project: UTH Continuum of Care Campus  
Project No. 005975.00

Issue Date: 03 MAR 2021  
Revision Date: 05 APR 2021 (2)

## Laminate FIN-44

**Manufacturer** Knoll  
**Product Name** Laminate  
**Color** Light Ash  
**Product Number** 139

**Special Instructions**



## Metal Finish FIN-45

**Manufacturer** Knoll  
**Product Name** Metal Finish  
**Color** Silver, Smooth  
**Product Number** 613

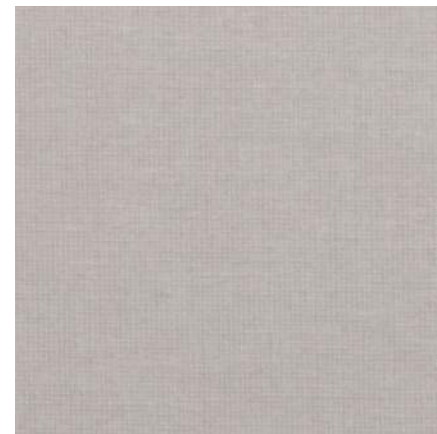
**Special Instructions**



## Element UPH-12

**Manufacturer** Knoll Textiles  
**Product Name** Element  
**Product Number** #W107710  
**Color** Silver  
**Content** 100% Polyester  
**Special Instructions** N/A

**Special Instructions**



Project: UTH Continuum of Care Campus  
Project No. 005975.00

Issue Date: 03 MAR 2021  
Revision Date: 05 APR 2021 (2)

---

**LEVEL 01**

**Location**

---

1N35D OFFICE

1S05E OFFICE

Project: UTH Continuum of Care Campus  
Project No. 005975.00

Issue Date: 03 MAR 2021  
Revision Date: 05 APR 2021 (2)

**Manufacturer** Knoll

**Item Name** Private Office Rectangular Desk

**Product Number**

Worksurface, 48"W: RSA482-PF-613-139-139  
Worksurface, 72"W: RSA723-PF-613-139-139  
Hutch, Case: ROHSHC7-81DH-139-139-1-F-613-L-S  
Hutch, Surround: ROHSHS7-81DHAF-139-W107710  
Pedestal, Box/Box/File: RP162J-139-139-M-F-613-L-S  
Pedestal, Back: RPDHB16-139  
Undercabinet Light: LED2IN37  
Cable Management, 25-1/2": D1WB26  
Cable Management, 35": D1WB36  
L-Base: RSDHL30-139  
Top to Top Bracket: RBF  
Set of 3 Cores/Keys: KSPEC3MS

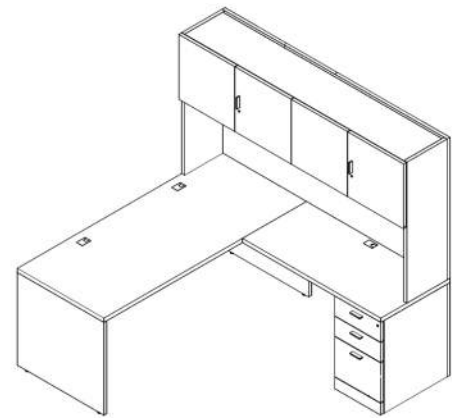


IMAGE MAY NOT PORTRAY EXACT SPECIFICATIONS

**Description**

Rectangular laminate worksurface with edge to match, profiles grommet in flush location  
L seated return, profiles grommet in flush location  
(2) end panels, flush/cantilevered; (2) worksurface cable management baskets  
Modesty panel, flush cantilevered  
LED undercabinet light  
Pedestal, box/box/file, laminate  
L-Base, laminate  
Locking, single height hinged door hutch with concealed cubby  
Single height hutch surround for hinged door  
Tackboard  
Pedestal, file/file, flush base  
Set of 3 cores/keys, matte silver

**Finish**

Worksurface: FIN-44  
Pedestal: FIN-44  
Tackboard: UPH-12  
Grommets/Locks: FIN-45

**Dimensions**

Overall: 72"W x 78"D x 72"H  
Worksurface: 48"W x 24"D x 1-1/4"H  
Worksurface: 72"W x 30"D x 1-1/4"H  
Pedestal: 16"W x 23"D x 28-3/4"H  
Hutch, Surround: 72"W x 15"D x 43"H  
Hutch, Case: 72"W x 15"D x 20"H

**Product Options** N/A

**Special Instructions**

Project: UTH Continuum of Care Campus  
Project No. 005975.00

Issue Date: 03 MAR 2021  
Revision Date: 05 APR 2021 (2)

**Laminate** **FIN-44**

**Manufacturer** Knoll  
**Product Name** Laminate  
**Color** Light Ash  
**Product Number** 139

**Special Instructions**



**Metal Finish** **FIN-45**

**Manufacturer** Knoll  
**Product Name** Metal Finish  
**Color** Silver, Smooth  
**Product Number** 613

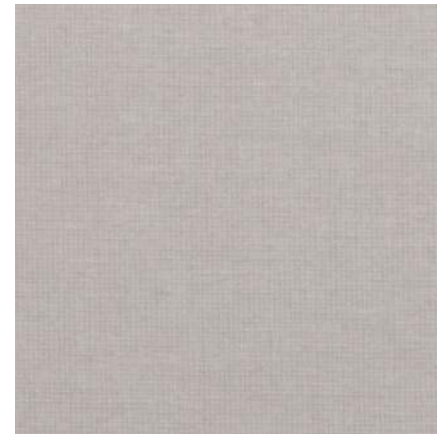
**Special Instructions**



**Element** **UPH-12**

**Manufacturer** Knoll Textiles  
**Product Name** Element  
**Product Number** #W107710  
**Color** Silver  
**Content** 100% Polyester  
**Special Instructions** N/A

**Special Instructions**



Project: UTH Continuum of Care Campus  
Project No. 005975.00

Issue Date: 03 MAR 2021  
Revision Date: 05 APR 2021 (2)

---

**LEVEL 01**

**Location**

---

1W35 EHS OFFICE

1W38 HSKPG OFFICE

Project: UTH Continuum of Care Campus  
Project No. 005975.00

Issue Date: 03 MAR 2021  
Revision Date: 05 APR 2021 (2)

**Manufacturer** Knoll

**Item Name** Private Office Rectangular Desk

**Product Number**

Worksurface, 48"W: RSA482-PF-613-139-139  
Worksurface, 72"W: RSA723-PF-613-139-139  
Hutch, Case: ROHSHC7-81DH-139-139-1-F-613-L-S  
Hutch, Surround: ROHSHS7-81DHAF-139-W107710  
Pedestal, Box/Box/File: RP162J-139-139-M-F-613-L-S  
Pedestal, Back: RPDHB16-139  
Undercabinet Light: LED2IN37  
Cable Management, 25-1/2": D1WB26  
Cable Management, 35": D1WB36  
L-Base: RSDHL30-139  
Top to Top Bracket: RBF  
Set of 3 Cores/Keys: KSPEC3MS

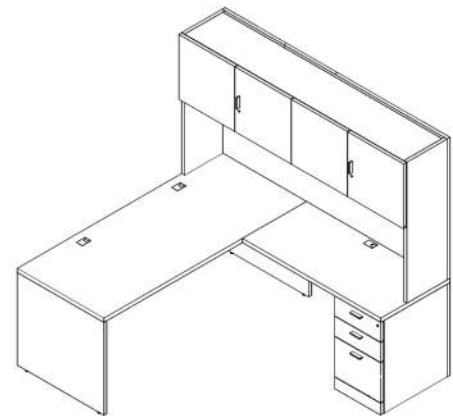


IMAGE MAY NOT PORTRAY EXACT SPECIFICATIONS

**Description**

Rectangular laminate worksurface with edge to match, profiles grommet in flush location  
R seated return, profiles grommet in flush location  
(2) end panels, flush/cantilevered; (2) worksurface cable management baskets  
Modesty panel, flush cantilevered  
LED undercabinet light  
Pedestal, box/box/file, laminate  
L-Base, laminate  
Locking, single height hinged door hutch with concealed cubby  
Single height hutch surround for hinged door  
Tackboard  
Pedestal, file/file, flush base  
Set of 3 cores/keys, matte silver

**Finish**

Worksurface: FIN-44  
Pedestal: FIN-44  
Tackboard: UPH-12  
Grommets/Locks: FIN-45

**Dimensions**

Overall: 72"W x 78"D x 72"H  
Worksurface: 48"W x 24"D x 1-1/4"H  
Worksurface: 72"W x 30"D x 1-1/4"H  
Pedestal: 16"W x 23"D x 28-3/4"H  
Hutch, Surround: 72"W x 15"D x 43"H  
Hutch, Case: 72"W x 15"D x 20"H

**Product Options** N/A

**Special Instructions**

1. Keyed alike per seated position.

Project: UTH Continuum of Care Campus  
Project No. 005975.00

Issue Date: 03 MAR 2021  
Revision Date: 05 APR 2021 (2)

## Laminate FIN-44

**Manufacturer** Knoll  
**Product Name** Laminate  
**Color** Light Ash  
**Product Number** 139

**Special Instructions**



## Metal Finish FIN-45

**Manufacturer** Knoll  
**Product Name** Metal Finish  
**Color** Silver, Smooth  
**Product Number** 613

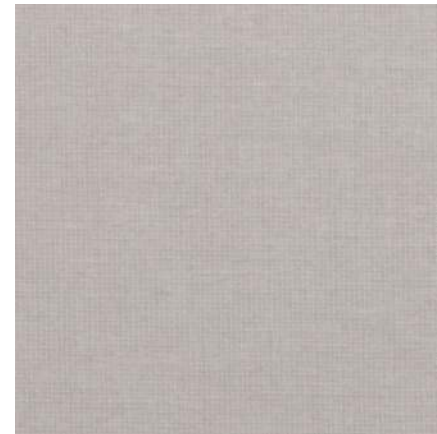
**Special Instructions**



## Element UPH-12

**Manufacturer** Knoll Textiles  
**Product Name** Element  
**Product Number** #W107710  
**Color** Silver  
**Content** 100% Polyester  
**Special Instructions** N/A

**Special Instructions**





Project: UTH Continuum of Care Campus  
Project No. 005975.00

Issue Date: 03 MAR 2021  
Revision Date: 05 APR 2021 (2)

---

**LEVEL 01**

**Location**

---

1N25C OFFICE  
1N25D OFFICE  
1N30C OFFICE  
1W39 FAC MAN. OFFICE

Project: UTH Continuum of Care Campus  
Project No. 005975.00

Issue Date: 03 MAR 2021  
Revision Date: 05 APR 2021 (2)

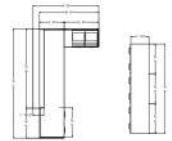
<b>Manufacturer</b>	OFS
<b>Item Name</b>	Element Reception Desk
<b>Product Number</b>	Reception Desk: NS-972265 Credenza: EL-972267 Lock and Key: LOCK-SET-1
<b>Description</b>	<p>Custom Reception L Unit with a center support and left end panel, 36" of the front panel at desk height for ADA, center and right back of worksurface grommets</p> <p>Front transaction box skinned in solid surface with FWP interior</p> <p>Right seated return with laminate front panel and worksurface, center grommet</p> <p>Laminate chassis, not mitered, horizontal grain</p> <p>(2) Laminate box/box/file pedestals, (2) Laminate 2H laterals. Standard metal VK pulls. Locking.</p> <p>Elements Credenza with (3) side by side 2H lateral files. Worksurface finished in solid surface. Standard metal VK pulls. Locking.</p> <p>Set of 1 lock and key.</p>
<b>Finish</b>	<p>Transaction Top: FIN-56</p> <p>Desk Panels/Worksurface: FIN-54</p> <p>Credenza Worksurface: FIN-56</p> <p>Pulls: FIN-55</p>
<b>Dimensions</b>	<p>Overall Reception Desk: 132"W x 80"D x 47.75"H</p> <p>Desk: 132"W x 38"D x 47.75"H</p> <p>Transaction Box: 96"W x 13.5"D x 36" x 47.75"H</p> <p>Return: 42"W x 22"D x 40.5"H</p> <p>Credenza: 108"W x 22"D x 30.31"H</p>
<b>Product Options</b>	N/A



IMAGE MAY NOT PORTRAY EXACT SPECIFICATIONS



IMAGE MAY NOT PORTRAY EXACT SPECIFICATIONS



### Special Instructions

1. Keyed alike per seated position.

Provide the Following for Review and Assurance of Specification Information:

Project: UTH Continuum of Care Campus  
Project No. 005975.00

Issue Date: 03 MAR 2021  
Revision Date: 05 APR 2021 (2)

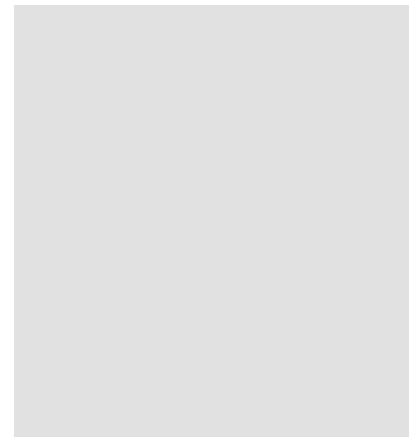
**Laminate** **FIN-54**

**Manufacturer** OFS  
**Product Name** Laminate  
**Color** Linen  
**Product Number** COP  
**Special Instructions**



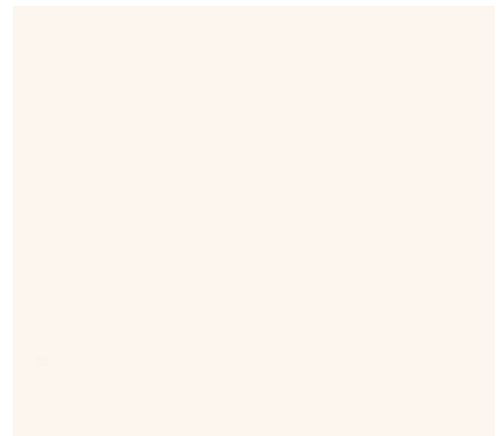
**Metal Finish** **FIN-55**

**Manufacturer** OFS  
**Product Name** Metal Finish  
**Color** Satin Nickel  
**Product Number** N/A  
**Special Instructions**



**Solid Surface** **FIN-56**

**Manufacturer** Corian  
**Product Name** Solid Surface  
**Color** Cameo White  
**Product Number** CWS  
**Special Instructions**



Project: UTH Continuum of Care Campus  
Project No. 005975.00

Issue Date: 03 MAR 2021  
Revision Date: 05 APR 2021 (2)

---

**LEVEL 01**

**Location**

---

1S20 RECEPTION

Project: UTH Continuum of Care Campus  
Project No. 005975.00

Issue Date: 03 MAR 2021  
Revision Date: 05 APR 2021 (2)

<b>Manufacturer</b>	OFS
<b>Item Name</b>	Nurse Admin Desk
<b>Product Number</b>	Reception Desk: NS-972284 Credenza: EL-972272 Lock and Key: LOCK-SET-4
<b>Description</b>	Custom Reception L Unit with Desk and a center support, left and right back of worksurface grommets. Right transaction box skinned in solid surface with a FWP interior. Right seated return with laminate front panel and worksurface, Laminate chassis not mitered with horizontal grain. Laminate front panel. (2) laminate box/box/file pedestals. Standard metal VK pulls, locking drawers.
<b>Finish</b>	Credenza with (2) side by side laminate 2H lateral files. Worksurface finished with solid surface. Standard VK metal pulls, locking drawers.  Transaction Top: FIN-56 Desk Panels/Worksurface: FIN-54 Credenza Worksurface: FIN-56 Pulls: FIN-55
<b>Dimensions</b>	Reception Unit: 114"W x 48"D x 47.75"H Transaction Box: 48"W x 13.5"D x 36" x 47.75"H Desk: 114"W x 30"D x 47.75"H Return: 18"W x 30"D x 47.75"H Credenza: 72"W x 22"D x 30.31"H
<b>Product Options</b>	N/A



IMAGE MAY NOT PORTRAY EXACT SPECIFICATIONS

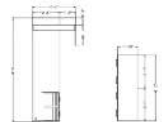


IMAGE MAY NOT PORTRAY EXACT SPECIFICATIONS

#### Special Instructions

1. Keyed alike per seated position.

Provide the Following for Review and Assurance of Specification Information:

Project: UTH Continuum of Care Campus  
Project No. 005975.00

Issue Date: 03 MAR 2021  
Revision Date: 05 APR 2021 (2)

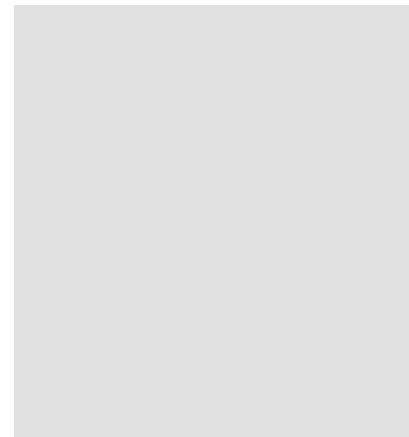
**Laminate FIN-54**

**Manufacturer** OFS  
**Product Name** Laminate  
**Color** Linen  
**Product Number** COP  
**Special Instructions**



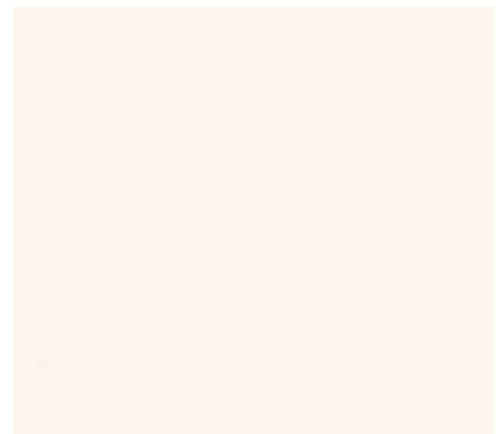
**Metal Finish FIN-55**

**Manufacturer** OFS  
**Product Name** Metal Finish  
**Color** Satin Nickel  
**Product Number** N/A  
**Special Instructions**



**Solid Surface FIN-56**

**Manufacturer** Corian  
**Product Name** Solid Surface  
**Color** Cameo White  
**Product Number** CWS  
**Special Instructions**



Project: UTH Continuum of Care Campus  
Project No. 005975.00

Issue Date: 03 MAR 2021  
Revision Date: 05 APR 2021 (2)

---

**LEVEL 01**

**Location**

---

1S29A NURSE ADMIN

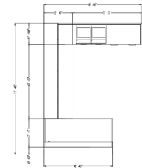
Project: UTH Continuum of Care Campus  
Project No. 005975.00

Issue Date: 03 MAR 2021  
Revision Date: 05 APR 2021 (2)

<b>Manufacturer</b>	OFS
<b>Item Name</b>	HR Reception Desk
<b>Product Number</b>	Reception Desk: NS-972286 Tackboard: FT2192 Overhead: 6-10019HDW6 Lock and Key: LOCK-SET-3
<b>Description</b>	<p>Custom Reception U Unit with Desk, right corner back of worksurface grommet Full width transaction box skinned in solid surface with a FWP interior Laminate bridge, center back of worksurface grommet LED undercabinet light Credenza with laminate worksurface, left corner facing back of worksurface grommet Laminate chassis, not mitered, with horizontal grain, grommet at left center (2) laminate box/box/file pedestals and (1) laminate 2H lateral. Standard VK metal pulls, locking drawers.</p> <p>Two-piece tackboard used with wallmount organizer. Laminate organizer with doors. No lock.</p> <p>Set of (3) locks and keys (pack of 3)</p>
<b>Finish</b>	Transaction Top: FIN-56 Desk Panels/Worksurface: FIN-54 Pulls: FIN-55 Tackboard: UPH-31
<b>Dimensions</b>	Reception Unit: 102"W x 138"D x 47.75"H Desk: 72"W x 38"D x 47.75"H Transaction Box: 72"W x 13.5"D x 36" x 47.75"H Bridge: 78"W x 30"D x 30"H Credenza: 102"W x 22"D x 40.5"H
<b>Product Options</b>	N/A



IMAGE MAY NOT PORTRAY EXACT SPECIFICATIONS



### Special Instructions

1. Keyed alike per seated position.

Provide the Following for Review and Assurance of Specification Information:



Project: UTH Continuum of Care Campus  
Project No. 005975.00

Issue Date: 03 MAR 2021  
Revision Date: 05 APR 2021 (2)

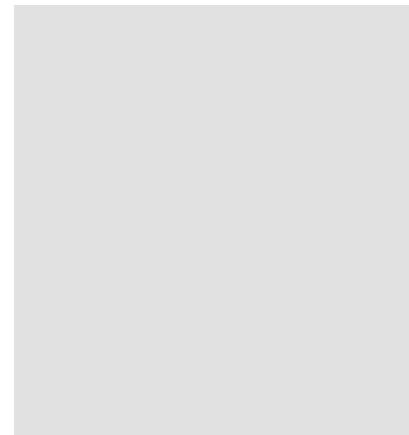
**Laminate FIN-54**

**Manufacturer** OFS  
**Product Name** Laminate  
**Color** Linen  
**Product Number** COP  
**Special Instructions**



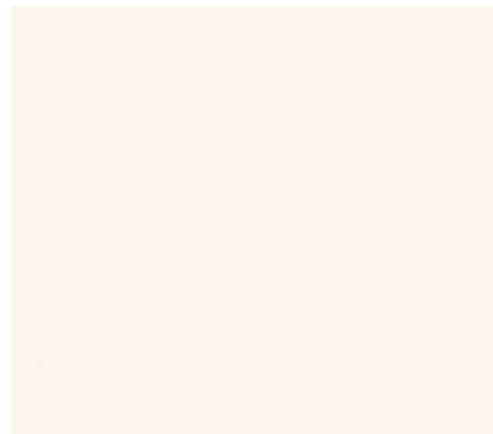
**Metal Finish FIN-55**

**Manufacturer** OFS  
**Product Name** Metal Finish  
**Color** Satin Nickel  
**Product Number** N/A  
**Special Instructions**



**Solid Surface FIN-56**

**Manufacturer** Corian  
**Product Name** Solid Surface  
**Color** Cameo White  
**Product Number** CWS  
**Special Instructions**



Project: UTH Continuum of Care Campus  
Project No. 005975.00

Issue Date: 03 MAR 2021  
Revision Date: 05 APR 2021 (2)

**Patina** **UPH-31**

**Manufacturer** Camira  
**Product Name** Patina  
**Product Number** PAT12  
**Color** Layered

**Special Instructions**



**LEVEL 01**

**Location**

1S28E HR RECEPTION

Project: UTH Continuum of Care Campus  
Project No. 005975.00

Issue Date: 03 MAR 2021  
Revision Date: 05 APR 2021 (2)

<b>Manufacturer</b>	OFS
<b>Item Name</b>	Admin (Charlotte) Desk
<b>Product Number</b>	Reception Desk: NS-972292 Credenza: EL-972269 Lock and Key: LOCK-SET-1
<b>Description</b>	<p>Custom Reception L Unit with desk and center support, left end panel and 42" of the front at desk height for ADA, center back of worksurface grommet</p> <p>Right transaction box skinned in solid surface with an FWP interior</p> <p>Right seated laminate return, left facing corner back of worksurface grommet , full width transaction box skinned in solid surface with an FWP interior</p> <p>Laminate chassis, not mitered, horizontal grain. Laminate front panel.</p> <p>(2) laminate box/box/file pedestals, (2) laminate 2H lateral files. Standard metal VK pull. Locking drawers.</p> <p>Element Credenza Lateral File with (4) side by side 2H laminate lateral files. Worksurface finished in solid surface. Standard metal VK pulls. Locking.</p>
<b>Finish</b>	<p>Transaction Top: FIN-56</p> <p>Desk Panels/Worksurface: FIN-54</p> <p>Credenza Worksurface: FIN-56</p> <p>Pulls: FIN-55</p>
<b>Dimensions</b>	<p>Reception Unit: 150"W x 78"D x 47.75"H</p> <p>Desk: 150"W x 38"W x 47.75"H</p> <p>Transaction Box: 108"W x 13.5"D x 36" x 47.75"H</p> <p>Return: 42"W x 38"D x 47.75"H</p> <p>Credenza: 138"W x 22"D x 30.31"H</p>
<b>Product Options</b>	N/A



IMAGE MAY NOT PORTRAY EXACT SPECIFICATIONS



IMAGE MAY NOT PORTRAY EXACT SPECIFICATIONS

#### Special Instructions

1. Keyed alike per seated position.

Provide the Following for Review and Assurance of Specification Information:

Project: UTH Continuum of Care Campus  
Project No. 005975.00

Issue Date: 03 MAR 2021  
Revision Date: 05 APR 2021 (2)

**Laminate** **FIN-54**

**Manufacturer** OFS  
**Product Name** Laminate  
**Color** Linen  
**Product Number** COP

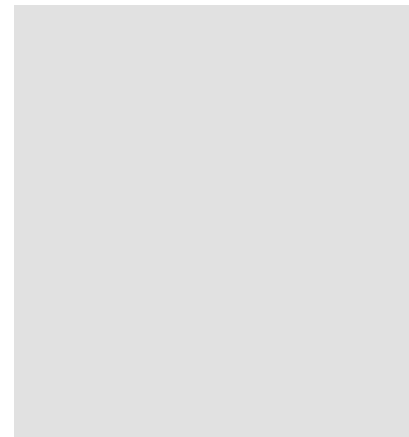
**Special Instructions**



**Metal Finish** **FIN-55**

**Manufacturer** OFS  
**Product Name** Metal Finish  
**Color** Satin Nickel  
**Product Number** N/A

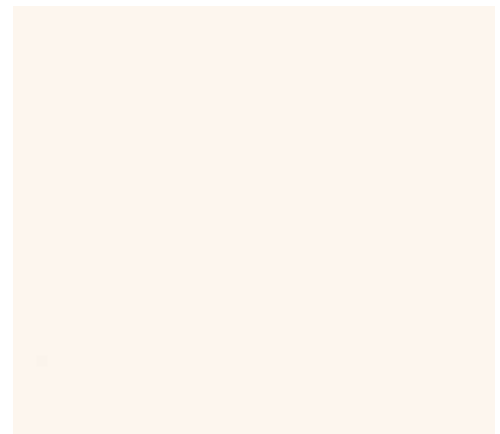
**Special Instructions**



**Solid Surface** **FIN-56**

**Manufacturer** Corian  
**Product Name** Solid Surface  
**Color** Cameo White  
**Product Number** CWS

**Special Instructions**



Project: UTH Continuum of Care Campus  
Project No. 005975.00

Issue Date: 03 MAR 2021  
Revision Date: 05 APR 2021 (2)

---

**LEVEL 01**

**Location**

---

1S22K ADMIN (CHARLOTTE)

Project: UTH Continuum of Care Campus  
Project No. 005975.00

Issue Date: 03 MAR 2021  
Revision Date: 05 APR 2021 (2)

## Manufacturer

**Item Name** MegaWall

**Product Number** TBA

**Description** Slat wall panels, System reveal tiled wall system

## Dimensions

**Finish** FIN-44

## Special Instructions

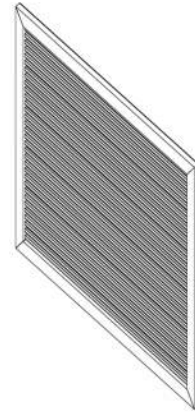


IMAGE MAY NOT PORTRAY EXACT  
SPECIFICATIONS

Provide the Following for Review and Assurance of Specification Information:

**Laminate** FIN-44

**Manufacturer** Knoll  
**Product Name** Laminate  
**Color** Light Ash  
**Product Number** 139

## Special Instructions



## Location

Project: UTH Continuum of Care Campus  
Project No. 005975.00

Issue Date: 03 MAR 2021  
Revision Date: 05 APR 2021 (2)

## Manufacturer

**Item Name** Outrigger  
**Product Number** TBD  
**Description** display shelves, laminate, powder coated metal piping support brackets, wall mounted  
**Dimensions** 61.75W x 18D x 65.75H  
**Finish** Shelves: FIN-44, Support/Brackets:  
**Special Instructions**



IMAGE MAY NOT PORTRAY EXACT  
SPECIFICATIONS

Provide the Following for Review and Assurance of Specification Information:

**Laminate** **FIN-44**

**Manufacturer** Knoll  
**Product Name** Laminate  
**Color** Light Ash  
**Product Number** 139

**Special Instructions**



Project: UTH Continuum of Care Campus  
Project No. 005975.00

Issue Date: 03 MAR 2021  
Revision Date: 05 APR 2021 (2)

**Manufacturer** Wenger

**Item Name** UltraStor

**Product Number** (2) #71; (2) #72; (1) #74

**Description** adjustable shelf musical instrument storage, molded polyurethane grooved shelves, full-length straight grille powder-coat doors, PVC radiused edging, four adjustable steel leveling glides, lockable doors

**Dimensions** Overall: 137-1/2"W x 29-1/4"D x 85-5/8"H

Overall #71: 27-1/2"W x 29-1/4"D x 85-5/8"H  
Compartment Sizes: 8"W x 27-3/8"D  
Compartment Height Range: 7-5/8" to 78-1/8"H  
Narrow Compartment Width: 6"W

Overall #72: 27-1/3"W x 29-1/4"D x 85-5/8"H  
Compartment Sizes: 12-3/8"W x 27-3/8"D  
Compartment Height Range: 7-5/8" to 78-1/8"H  
Narrow Compartment Width: 9-3/8"W

Overall #74: 27-1/3"W x 29-1/4"D x 85-5/8"H  
Compartment Sizes: 25-1/2"W x 27-3/8"D  
Compartment Height Range: 7" to 78-1/8"H  
Narrow Compartment Width: 19-1/2"W

**Finish** Cabinet: FIN-58; Edging: FIN-59; Grille: FIN-60

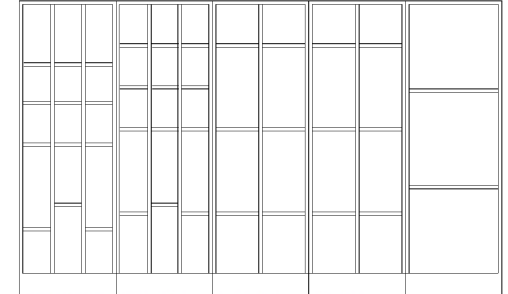


IMAGE MAY NOT PORTRAY EXACT  
SPECIFICATIONS

## Special Instructions

Provide the Following for Review and Assurance of Specification Information:



Project: UTH Continuum of Care Campus  
Project No. 005975.00

Issue Date: 03 MAR 2021  
Revision Date: 05 APR 2021 (2)

## Laminate FIN-58

**Manufacturer** Wenger  
**Product Name** Laminate  
**Color** Wenger Maple  
**Product Number** N/A

**Special Instructions**



## Edging FIN-59

**Manufacturer** Wenger  
**Product Name** Edging  
**Color** Oyster  
**Product Number** N/A

**Special Instructions**



## Metal Finish FIN-60

**Manufacturer** Wenger  
**Product Name** Metal Finish  
**Color** Oyster  
**Product Number** N/A

**Special Instructions**



Project: UTH Continuum of Care Campus  
Project No. 005975.00

Issue Date: 03 MAR 2021  
Revision Date: 05 APR 2021 (2)

---

## LEVEL 01

### Location

---

1N20A MUSIC THER.

Project: UTH Continuum of Care Campus  
Project No. 005975.00

Issue Date: 03 MAR 2021  
Revision Date: 05 APR 2021 (2)

**Manufacturer** Norix  
**Item Name** Hondo Nuevo  
**Product Number** HN840.HN850  
**Description** Rotationally molded side table/stool with  
tamper resistant fasteners to a  
rotationally molded linear low density  
polyethylene base  
**Dimensions** 18"dia. x 18.5"H  
**Finish** FIN-33  
**Product Options** N/A  
**Special Instructions**



IMAGE MAY NOT PORTRAY EXACT  
SPECIFICATIONS

Provide the Following for Review and Assurance of Specification Information:

**Plastic Finish** FIN-33

**Manufacturer** Norix  
**Product Name** Plastic Finish  
**Color** Graphite  
**Product Number** N/A  
**Special Instructions**



**LEVEL 01**

**Location**

**LEVEL 02**

**Location**

Project: UTH Continuum of Care Campus  
Project No. 005975.00

Issue Date: 03 MAR 2021  
Revision Date: 05 APR 2021 (2)

2A15 VISITOR ROOM  
2A21 DAY ROOM  
2A33 DAY ROOM  
2B15 VISITOR ROOM  
2B21 DAY ROOM  
2B33 DAY ROOM  
2C15 VISITOR ROOM  
2C21 DAY ROOM  
2C33 DAY ROOM  
2D15 VISITOR ROOM  
2D21 DAY ROOM  
2D33 DAY ROOM

## LEVEL 03

### Location

3A15 VISITOR ROOM  
3A21 DAY ROOM  
3A33 DAY ROOM  
3B15 VISITOR ROOM  
3B21 DAY ROOM  
3B33 DAY ROOM  
3C15 VISITOR ROOM  
3C21 DAY ROOM  
3C33 DAY ROOM  
3D15 VISITOR ROOM  
3D21 DAY ROOM  
3D33 DAY ROOM

## LEVEL 04

### Location

4A15 VISITOR ROOM  
4A21 DAY ROOM  
4A33 DAY ROOM  
4B15 VISITOR ROOM  
4B21 DAY ROOM  
4B33 DAY ROOM  
4C15 VISITOR ROOM  
4C21 DAY ROOM  
4C33 DAY ROOM  
4CC3 CORRIDOR

Project: UTH Continuum of Care Campus

Issue Date: 03 MAR 2021

Project No. 005975.00

Revision Date: 05 APR 2021 (2)

4D04 SOCIAL ENGAGEMENT

Project: UTH Continuum of Care Campus  
Project No. 005975.00

Issue Date: 03 MAR 2021  
Revision Date: 05 APR 2021 (2)

<b>Manufacturer</b>	Computer Comforts
<b>Item Name</b>	Hide-Away Table
<b>Product Number</b>	HA-663029-U
<b>Description</b>	Rectangle laminate table top (dual user) with 3mm edge banding, rounded corners, top reinforced to powdercoated metal base/legs, two adjustable leveling glides on the foot of each leg, two full steel modesty panels, internal and external cable management trays, louvered vents, removable access panels, two heavy duty steel LCD monitor arms with horizontal and vertical adjustments, two horizontal keyboard/mouse platforms
<b>Dimensions</b>	Overall: 66"W x 30"D x 29"H Front Surface: 66"W x 20"D Rear Lid: 66"W x 10.5"D
<b>Finish</b>	Surface: FIN-51 Edgeband: FIN-52 Base: FIN-53
<b>Product Options</b>	N/A
<b>Special Instructions</b>	



IMAGE MAY NOT PORTRAY EXACT SPECIFICATIONS

Provide the Following for Review and Assurance of Specification Information:

**Laminate** FIN-51

**Manufacturer** Computer Comforts  
**Product Name** Laminate  
**Color** Neowalnut  
**Product Number** 7991  
**Special Instructions**



Project: UTH Continuum of Care Campus

Issue Date: 03 MAR 2021

Project No. 005975.00

Revision Date: 05 APR 2021 (2)

**Edgeband Finish FIN-52**

**Manufacturer** Computer Comforts  
**Product Name** Edgeband Finish  
**Color** Graphite (Charcoal)  
**Product Number** N/A

**Special Instructions**



**Metal Finish FIN-53**

**Manufacturer** Computer Comforts  
**Product Name** Metal Finish  
**Color** Wisdom  
**Product Number** N/A

**Special Instructions**



Project: UTH Continuum of Care Campus  
Project No. 005975.00

Issue Date: 03 MAR 2021  
Revision Date: 05 APR 2021 (2)

---

**LEVEL 02**

**Location**

---

2A16 TEAM ROOM  
2A17 CONSULT ROOM  
2B16 TEAM ROOM  
2B17 CONSULT ROOM  
2C16 TEAM ROOM  
2C17 CONSULT ROOM  
2D16 TEAM ROOM  
2D17 CONSULT ROOM

**LEVEL 03**

**Location**

---

3A16 TEAM ROOM  
3A17 CONSULT ROOM  
3B16 TEAM ROOM  
3B17 CONSULT ROOM  
3C16 TEAM ROOM  
3C17 CONSULT ROOM  
3D16 TEAM ROOM  
3D17 CONSULT ROOM

**LEVEL 04**

**Location**

---

4A16 TEAM ROOM  
4A17 CONSULT ROOM  
4B16 TEAM ROOM  
4B17 CONSULT ROOM  
4C16 TEAM ROOM  
4C17 CONSULT ROOM



Project: UTH Continuum of Care Campus  
Project No. 005975.00

Issue Date: 03 MAR 2021  
Revision Date: 05 APR 2021 (2)

<b>Manufacturer</b>	Global Furniture
<b>Item Name</b>	Bungee
<b>Product Number</b>	BX2460RESBS
<b>Description</b>	Rectangular table with laminate top with matching bungee bubble edge with silver trim, radiused corner, flip and nest, metal spider legs with soft flooring casters, bungee cords to attach units
<b>Dimensions</b>	60"W x 24"D x 29"H
<b>Finish</b>	Top: TBD Edge: FIN-67 Base: FIN-19 Casters: FIN-19
<b>Product Options</b>	N/A
<b>Special Instructions</b>	



IMAGE MAY NOT PORTRAY EXACT SPECIFICATIONS

Provide the Following for Review and Assurance of Specification Information:

**Metal Finish** FIN-19

**Manufacturer** Global Furniture  
**Product Name** Metal Finish  
**Color** Silver  
**Product Number** SI

**Special Instructions**



Project: UTH Continuum of Care Campus  
Project No. 005975.00

Issue Date: 03 MAR 2021  
Revision Date: 05 APR 2021 (2)

**Laminate** **FIN-67**

**Manufacturer** Global Furniture  
**Product Name** Laminate  
**Color** TBD  
**Product Number** TBD

**Special Instructions**



## LEVEL 01

**Location**

1N10P TECH WORK  
1N19 SAT. COURT  
1N20A MUSIC THER.  
1W05A SMALL MEETING  
1W05B SMALL MEETING

Project: UTH Continuum of Care Campus  
Project No. 005975.00

Issue Date: 03 MAR 2021  
Revision Date: 05 APR 2021 (2)

<b>Manufacturer</b>	Global Furniture
<b>Item Name</b>	Bungee
<b>Product Number</b>	BX3048RES-BS
<b>Description</b>	Rectangular table with laminate top with matching bungee bubble edge with Silver trim, radiused corner, flip and nest, metal spider legs with adjustable glides, bungee cords to attach units
<b>Dimensions</b>	48"W x 36"D x 29"H
<b>Finish</b>	Top: FIN-67 Edge: FIN-67 Base: FIN-19 Casters: FIN-19
<b>Product Options</b>	N/A
<b>Special Instructions</b>	



IMAGE MAY NOT PORTRAY EXACT  
SPECIFICATIONS

Provide the Following for Review and Assurance of Specification Information:

## Metal Finish FIN-19

<b>Manufacturer</b>	Global Furniture
<b>Product Name</b>	Metal Finish
<b>Color</b>	Silver
<b>Product Number</b>	SI
<b>Special Instructions</b>	



Project: UTH Continuum of Care Campus  
Project No. 005975.00

Issue Date: 03 MAR 2021  
Revision Date: 05 APR 2021 (2)

## Laminate

**FIN-67**

Manufacturer	Global Furniture
--------------	------------------

Product Name	Laminate
--------------	----------

<b>Color</b>	TBD
--------------	-----

Product Number	TBD
----------------	-----

### Special Instructions

## LEVEL 01

### Location

1W10B WORK ROOM

Project: UTH Continuum of Care Campus  
Project No. 005975.00

Issue Date: 03 MAR 2021  
Revision Date: 05 APR 2021 (2)

<b>Manufacturer</b>	Global Furniture
<b>Item Name</b>	Bungee
<b>Product Number</b>	BX3060RES-BS
<b>Description</b>	Rectangular table with laminate top with matching bungee bubble edge with silver trim, radiused corner, flip and nest, metal spider legs with adjustable glides, bungee cords to attach units
<b>Dimensions</b>	60"W x 30"D x 29"H
<b>Finish</b>	Top: FIN-67 Edge: FIN-67 Base: FIN-19 Casters: FIN-19
<b>Product Options</b>	N/A
<b>Special Instructions</b>	



IMAGE MAY NOT PORTRAY EXACT  
SPECIFICATIONS

Provide the Following for Review and Assurance of Specification Information:

## Metal Finish FIN-19

<b>Manufacturer</b>	Global Furniture
<b>Product Name</b>	Metal Finish
<b>Color</b>	Silver
<b>Product Number</b>	SI
<b>Special Instructions</b>	



Project: UTH Continuum of Care Campus  
Project No. 005975.00

Issue Date: 03 MAR 2021  
Revision Date: 05 APR 2021 (2)

**Laminate** **FIN-67**

**Manufacturer** Global Furniture  
**Product Name** Laminate  
**Color** TBD  
**Product Number** TBD

**Special Instructions**



**LEVEL 01**

**Location**

1N17 PROP. STOR.

Project: UTH Continuum of Care Campus  
Project No. 005975.00

Issue Date: 03 MAR 2021  
Revision Date: 05 APR 2021 (2)

<b>Manufacturer</b>	Global Furniture
<b>Item Name</b>	Bungee
<b>Product Number</b>	Table: B2472RES-WHE-BS-SI-CS-AG2 Power Block: COV-SM-2-S-108
<b>Description</b>	Rectangular table with laminate top with matching bungee bubble edge with silver trim, radiused corner, powder-coated metal tapered legs with adjustable glides, bungee cords to attach units, center grommet, Cove mini - power with two power outlets
<b>Dimensions</b>	72"W x 24"D x 29"H
<b>Finish</b>	Top: FIN-67 Edge: FIN-67 Base: FIN-10 Casters: FIN-10
<b>Product Options</b>	N/A
<b>Special Instructions</b>	



IMAGE MAY NOT PORTRAY EXACT  
SPECIFICATIONS

Provide the Following for Review and Assurance of Specification Information:

## Metal Finish FIN-19

<b>Manufacturer</b>	Global Furniture
<b>Product Name</b>	Metal Finish
<b>Color</b>	Silver
<b>Product Number</b>	SI
<b>Special Instructions</b>	



Project: UTH Continuum of Care Campus  
Project No. 005975.00

Issue Date: 03 MAR 2021  
Revision Date: 05 APR 2021 (2)

**Laminate** **FIN-67**

**Manufacturer** Global Furniture

**Product Name** Laminate

**Color** TBD

**Product Number** TBD

**Special Instructions**



**LEVEL 01**

**Location**

1N35B TEAM ROOM



Project: UTH Continuum of Care Campus  
Project No. 005975.00

Issue Date: 03 MAR 2021  
Revision Date: 05 APR 2021 (2)

<b>Manufacturer</b>	Global Furniture
<b>Item Name</b>	Bungee
<b>Product Number</b>	BX3042RESBS
<b>Description</b>	Rectangular table with laminate top with matching bungee bubble edge with silver trim, radiused corner, flip and nest, metal spider legs with soft flooring casters, bungee cords to attach units
<b>Dimensions</b>	42"W x 30"D x 29"H
<b>Finish</b>	Top: FIN-67 Edge: FIN-67 Base: FIN-19 Casters: FIN-19
<b>Product Options</b>	N/A
<b>Special Instructions</b>	



IMAGE MAY NOT PORTRAY EXACT  
SPECIFICATIONS

Provide the Following for Review and Assurance of Specification Information:

## Metal Finish FIN-19

<b>Manufacturer</b>	Global Furniture
<b>Product Name</b>	Metal Finish
<b>Color</b>	Silver
<b>Product Number</b>	SI
<b>Special Instructions</b>	



Project: UTH Continuum of Care Campus  
Project No. 005975.00

Issue Date: 03 MAR 2021  
Revision Date: 05 APR 2021 (2)

**Laminate** **FIN-67**

**Manufacturer** Global Furniture  
**Product Name** Laminate  
**Color** TBD  
**Product Number** TBD

**Special Instructions**



**LEVEL 01**

**Location**

1N20N ACTIVITY ROOM

Project: UTH Continuum of Care Campus  
Project No. 005975.00

Issue Date: 03 MAR 2021  
Revision Date: 05 APR 2021 (2)

**Manufacturer** Stance Healthcare

**Item Name** Fortress Wardrobe

**Product Number** SF340

**Description** Open shelf laminate wardrobe with 3mm PVC edge to match, five openings, slope top, adjustable glides

**Finish** FIN-40

**Dimensions** 24"W x 22.5"D x 73.5"H

**Product Options** N/A

**Special Instructions**



IMAGE MAY NOT PORTRAY EXACT SPECIFICATIONS

Provide the Following for Review and Assurance of Specification Information:

## Laminate Finish FIN-40

**Manufacturer** Stance Healthcare

**Product Name** Laminate Finish

**Color** Rustic Cherry

**Product Number** N/A

**Special Instructions**



## LEVEL 01

Location

## LEVEL 02

Location

Project: UTH Continuum of Care Campus  
Project No. 005975.00

Issue Date: 03 MAR 2021  
Revision Date: 05 APR 2021 (2)

---

2A01 PATIENT SINGLE  
2A02 PATIENT SINGLE  
2A03 PATIENT DOUBLE  
2A04 PATIENT DOUBLE  
2A05 PATIENT DOUBLE  
2A06 PATIENT DOUBLE  
2A07 PATIENT DOUBLE  
2A08 PATIENT SINGLE ADA  
2A09 PATIENT SINGLE ADA  
2A10 PATIENT DOUBLE  
2A11 PATIENT DOUBLE  
2A12 PATIENT DOUBLE  
2A13 PATIENT DOUBLE  
2A14 PATIENT DOUBLE  
2B01 PATIENT SINGLE  
2B02 PATIENT SINGLE  
2B03 PATIENT DOUBLE  
2B04 PATIENT DOUBLE  
2B05 PATIENT DOUBLE  
2B06 PATIENT DOUBLE  
2B07 PATIENT DOUBLE  
2B08 PATIENT SINGLE ADA  
2B09 PATIENT SINGLE ADA  
2B10 PATIENT DOUBLE  
2B11 PATIENT DOUBLE  
2B12 PATIENT DOUBLE  
2B13 PATIENT DOUBLE  
2B14 PATIENT DOUBLE  
2C01 PATIENT SINGLE  
2C02 PATIENT SINGLE  
2C03 PATIENT DOUBLE  
2C04 PATIENT DOUBLE  
2C05 PATIENT DOUBLE  
2C06 PATIENT DOUBLE  
2C07 PATIENT DOUBLE  
2C08 PATIENT SINGLE ADA  
2C09 PATIENT SINGLE ADA  
2C10 PATIENT DOUBLE

Project: UTH Continuum of Care Campus  
Project No. 005975.00

Issue Date: 03 MAR 2021  
Revision Date: 05 APR 2021 (2)

2C11 PATIENT DOUBLE  
2C12 PATIENT DOUBLE  
2C13 PATIENT DOUBLE  
2C14 PATIENT DOUBLE  
2D01 PATIENT SINGLE  
2D02 PATIENT SINGLE  
2D03 PATIENT DOUBLE  
2D04 PATIENT DOUBLE  
2D05 PATIENT DOUBLE  
2D06 PATIENT DOUBLE  
2D07 PATIENT DOUBLE  
2D08 PATIENT SINGLE ADA  
2D09 PATIENT SINGLE ADA  
2D10 PATIENT DOUBLE  
2D11 PATIENT DOUBLE  
2D12 PATIENT DOUBLE  
2D13 PATIENT DOUBLE  
2D14 PATIENT DOUBLE

## LEVEL 03

### Location

3A01 PATIENT SINGLE  
3A02 PATIENT SINGLE  
3A03 PATIENT DOUBLE  
3A04 PATIENT DOUBLE  
3A05 PATIENT DOUBLE  
3A06 PATIENT DOUBLE  
3A07 PATIENT DOUBLE  
3A08 PATIENT SINGLE ADA  
3A09 PATIENT SINGLE ADA  
3A10 PATIENT DOUBLE  
3A11 PATIENT DOUBLE  
3A12 PATIENT DOUBLE  
3A13 PATIENT DOUBLE  
3A14 PATIENT DOUBLE  
3B01 PATIENT SINGLE  
3B02 PATIENT SINGLE  
3B03 PATIENT DOUBLE

Project: UTH Continuum of Care Campus  
Project No. 005975.00

Issue Date: 03 MAR 2021  
Revision Date: 05 APR 2021 (2)

---

3B04 PATIENT DOUBLE  
3B05 PATIENT DOUBLE  
3B06 PATIENT DOUBLE  
3B07 PATIENT DOUBLE  
3B08 PATIENT SINGLE ADA  
3B09 PATIENT SINGLE ADA  
3B10 PATIENT DOUBLE  
3B11 PATIENT DOUBLE  
3B12 PATIENT DOUBLE  
3B13 PATIENT DOUBLE  
3B14 PATIENT DOUBLE  
3C01 PATIENT SINGLE  
3C02 PATIENT SINGLE  
3C03 PATIENT DOUBLE  
3C04 PATIENT DOUBLE  
3C05 PATIENT DOUBLE  
3C06 PATIENT DOUBLE  
3C07 PATIENT DOUBLE  
3C08 PATIENT SINGLE ADA  
3C09 PATIENT SINGLE ADA  
3C10 PATIENT DOUBLE  
3C11 PATIENT DOUBLE  
3C12 PATIENT DOUBLE  
3C13 PATIENT DOUBLE  
3C14 PATIENT DOUBLE  
3D01 PATIENT SINGLE  
3D02 PATIENT SINGLE  
3D03 PATIENT DOUBLE  
3D04 PATIENT DOUBLE  
3D05 PATIENT DOUBLE  
3D06 PATIENT DOUBLE  
3D07 PATIENT DOUBLE  
3D08 PATIENT SINGLE ADA  
3D09 PATIENT SINGLE ADA  
3D10 PATIENT DOUBLE  
3D11 PATIENT DOUBLE  
3D12 PATIENT DOUBLE  
3D13 PATIENT DOUBLE

Project: UTH Continuum of Care Campus  
Project No. 005975.00

Issue Date: 03 MAR 2021  
Revision Date: 05 APR 2021 (2)

3D14 PATIENT DOUBLE

## LEVEL 04

### Location

4A01 PATIENT SINGLE  
4A02 PATIENT SINGLE  
4A03 PATIENT DOUBLE  
4A04 PATIENT DOUBLE  
4A05 PATIENT DOUBLE  
4A06 PATIENT DOUBLE  
4A07 PATIENT DOUBLE  
4A08 PATIENT SINGLE ADA  
4A09 PATIENT SINGLE ADA  
4A10 PATIENT DOUBLE  
4A11 PATIENT DOUBLE  
4A12 PATIENT DOUBLE  
4A13 PATIENT DOUBLE  
4A14 PATIENT DOUBLE  
4B01 PATIENT SINGLE  
4B02 PATIENT SINGLE  
4B03 PATIENT DOUBLE  
4B04 PATIENT DOUBLE  
4B05 PATIENT DOUBLE  
4B06 PATIENT DOUBLE  
4B07 PATIENT DOUBLE  
4B08 PATIENT SINGLE ADA  
4B09 PATIENT SINGLE ADA  
4B10 PATIENT DOUBLE  
4B11 PATIENT DOUBLE  
4B12 PATIENT DOUBLE  
4B13 PATIENT DOUBLE  
4B14 PATIENT DOUBLE  
4C01 PATIENT SINGLE  
4C02 PATIENT SINGLE  
4C03 PATIENT DOUBLE  
4C04 PATIENT DOUBLE  
4C05 PATIENT DOUBLE  
4C06 PATIENT DOUBLE

Project: UTH Continuum of Care Campus  
Project No. 005975.00

Issue Date: 03 MAR 2021  
Revision Date: 05 APR 2021 (2)

---

4C08 PATIENT SINGLE  
4C09 PATIENT SINGLE  
4C10 PATIENT DOUBLE  
4C11 PATIENT DOUBLE  
4C12 PATIENT DOUBLE  
4C13 PATIENT DOUBLE  
4C14 PATIENT DOUBLE  
STC-47 Room



Project: UTH Continuum of Care Campus  
Project No. 005975.00

Issue Date: 03 MAR 2021  
Revision Date: 05 APR 2021 (2)

<b>Manufacturer</b>	Knoll
<b>Item Name</b>	Dividends - Carrel
<b>Product Number</b>	(1) Worksurface: D1R6624G-139-139 (1) Cable Management: D1WB26 (1) Stiffening Strap: DB1WR54-NA (2) End Unit Support: DD1EU24-613T (1) Pedestal, Box/Box/File: DS4PFL24A-613 (1) Overdesk with tackboard: DS3ODSS1576614LT (1) LED Undercabinet Light: LED2IN37-SLV (1) Set of 2 Cores/Keys: KSPEC2MS
<b>Description</b>	Rectangular laminate worksurface with the edge to match, center grommet, cable management basket, stiffening strap, end unit support Floorstanding box/box/file pedestal with lock, plastic black accessory tray, Standard box drawer slides Metal hutch cabinet with sliding laminate doors, locking Tackboard LED under cabinet light Leveling glides that allow for 1-1/2"H of adjustment Set of 2 cores/keys, silver
<b>Dimensions</b>	Overall: 66"W x 24"D x 29"H Worksurface: 66"W x 24"D x 29"H Tackboard: 66"W x 23-1/8"H
<b>Finish</b>	Worksurface: FIN-44 Pedestal: FIN-44 Tackboard: UPH-12 Locks: FIN-45
<b>Product Options</b>	N/A



IMAGE MAY NOT PORTRAY EXACT SPECIFICATIONS

#### Special Instructions

1. Keyed alike per seated position.

Provide the Following for Review and Assurance of Specification Information:

Project: UTH Continuum of Care Campus  
Project No. 005975.00

Issue Date: 03 MAR 2021  
Revision Date: 05 APR 2021 (2)

## Laminate FIN-44

**Manufacturer** Knoll  
**Product Name** Laminate  
**Color** Light Ash  
**Product Number** 139

**Special Instructions**



## Metal Finish FIN-45

**Manufacturer** Knoll  
**Product Name** Metal Finish  
**Color** Silver, Smooth  
**Product Number** 613

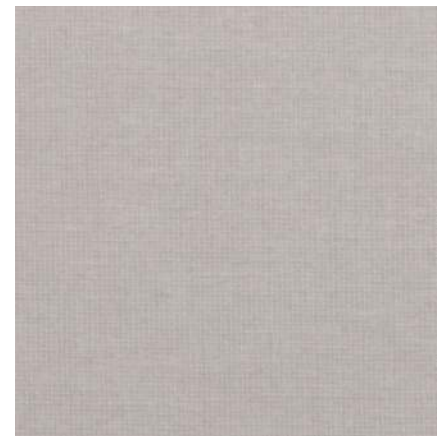
**Special Instructions**



## Element UPH-12

**Manufacturer** Knoll Textiles  
**Product Name** Element  
**Product Number** #W107710  
**Color** Silver  
**Content** 100% Polyester  
**Special Instructions** N/A

**Special Instructions**



Project: UTH Continuum of Care Campus  
Project No. 005975.00

Issue Date: 03 MAR 2021  
Revision Date: 05 APR 2021 (2)

---

## LEVEL 01

### Location

---

1W30 CS OFFICE



1 LEVEL 01 PLAN  
1/8" = 1'-0"

UNIVERSITY OF TEXAS  
HEALTH SCIENCE  
CENTER

BEHAVIORAL HEALTH  
CONTINUUM OF CARE  
FURNITURE

CANNONDESIGN

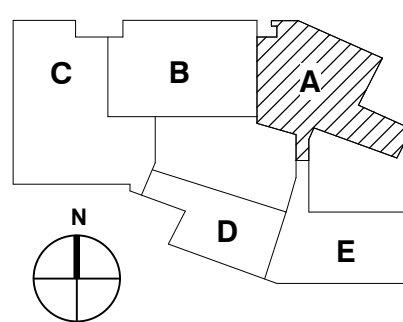
3737 BUFFALO SPEEDWAY, SUITE 1200  
HOUSTON, TX 77098  
P: 713.621.2100

www.cannondesign.com

FOR REFERENCE ONLY

FURNITURE RFP ADDENDUM 2 4/5/2021

95% FURNITURE SPEC PKG 01 FEB 2021  
Rev. Description Date



Drawing Title: KEY PLAN

LEVEL 01 FURNITURE  
PLAN - AREA A

Project No.: 005975.00 Checked by: Checker

IF1.1A

© 2019 The Cannon Corporation

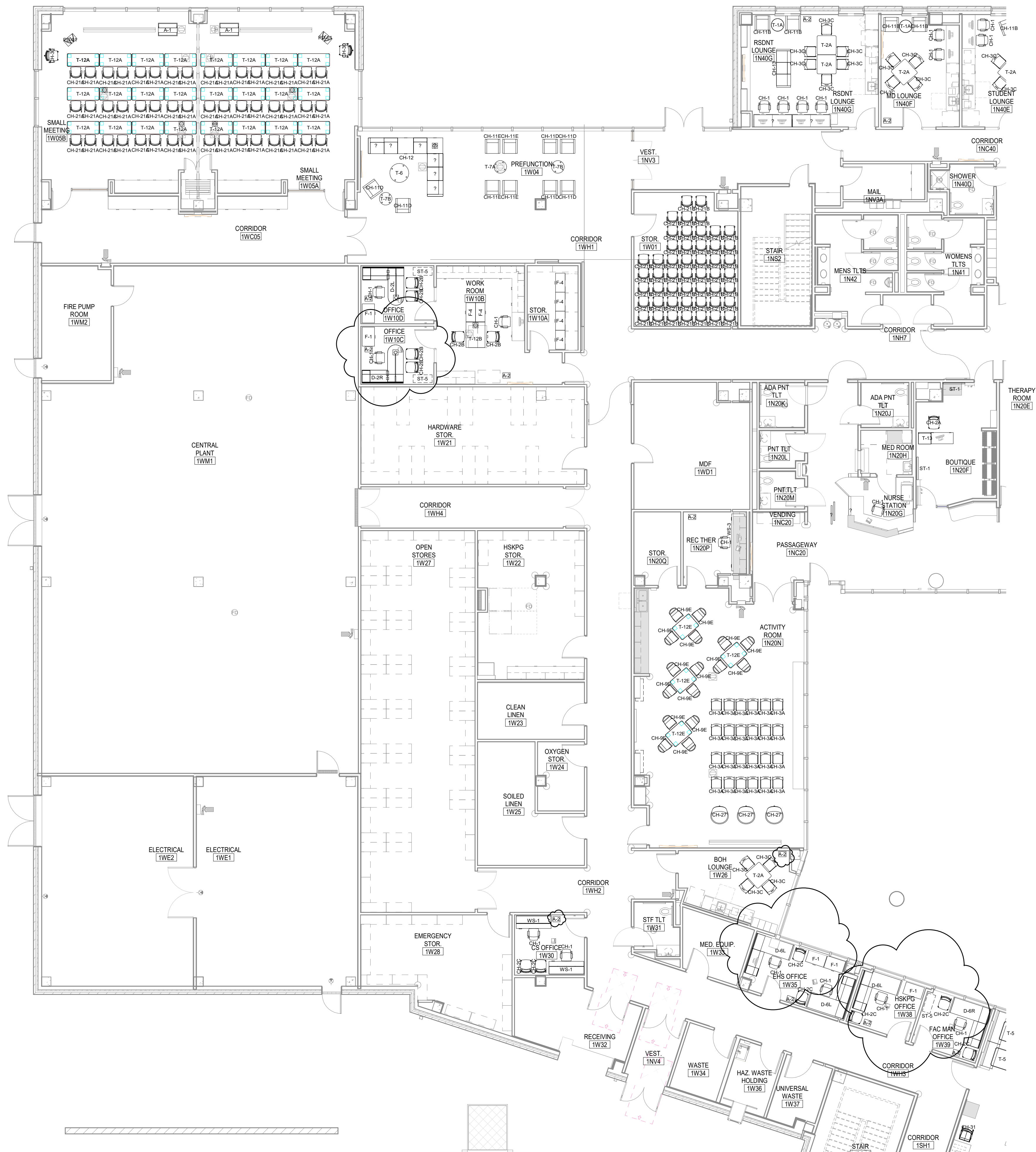




FOR REFERENCE ONLY

© 2019 The Cannon Corporation.





1 LEVEL 01 PLAN  
1/8" = 1'-0"

UNIVERSITY OF TEXAS  
HEALTH SCIENCE  
CENTER

BEHAVIORAL HEALTH  
CONTINUUM OF CARE  
FURNITURE

CANNONDESIGN

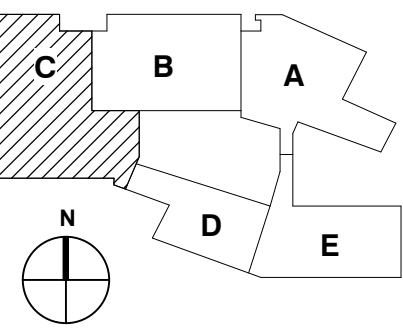
3737 BUFFALO SPEEDWAY, SUITE 1200  
HOUSTON, TX 77098  
P: 713.621.2100

www.cannondesign.com

FOR REFERENCE ONLY

FURNITURE RFP ADDENDUM 2 4/5/2021

95% FURNITURE SPEC PKG 01 FEB 2021  
Rev. Description Date



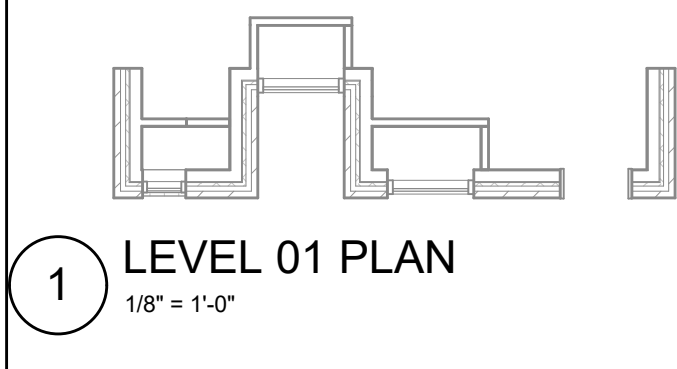
Drawing Title: KEY PLAN

LEVEL 01 FURNITURE  
PLAN - AREA C

Project No.: 005975.00 Checked by: Checker

IF1.1C





FOR REFERENCE ONLY

© 2019 The Cannon Corporation.



© 2019 The Cannon Corporation.



1 LEVEL 02 FURNITURE PLAN - AREA A  
3/16" = 1'-0"



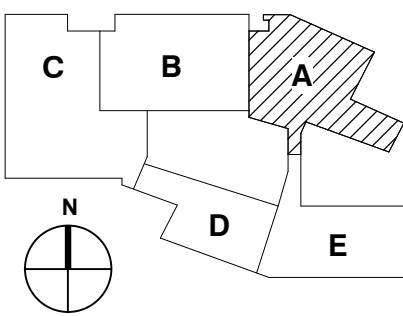
UNIVERSITY OF TEXAS  
HEALTH SCIENCE  
CENTER  
BEHAVIORAL HEALTH  
CONTINUUM OF CARE  
FURNITURE

**CANNONDESIGN**  
3737 BUFFALO SPEEDWAY, SUITE 1200  
HOUSTON, TX 77098  
P: 713.621.2100

www.cannondesign.com

FOR REFERENCE ONLY

FURNITURE RFP ADDENDUM 2 4/5/2021  
95% FURNITURE SPEC PKG 01 FEB 2021  
Rev. Description Date



Drawing Title: KEY PLAN

LEVEL 02 FURNITURE  
PLAN - AREA A

Project No.: 005975.00 Checked by: Checker

**IF2.1A**





1 LEVEL 02 FURNITURE PLAN - AREA B  
3/16" = 1'-0"

UNIVERSITY OF TEXAS  
HEALTH SCIENCE  
CENTER

BEHAVIORAL HEALTH  
CONTINUUM OF CARE  
FURNITURE

CANNONDESIGN

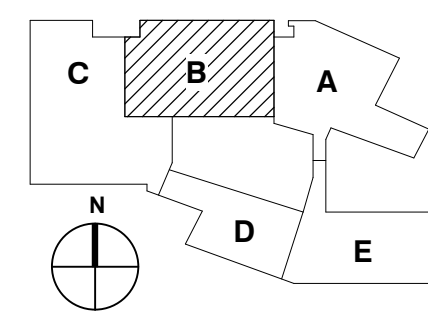
3737 BUFFALO SPEEDWAY, SUITE 1200  
HOUSTON, TX 77098  
P: 713.621.2100

www.cannondesign.com

FOR REFERENCE ONLY

FURNITURE RFP ADDENDUM 2 4/5/2021

95% FURNITURE SPEC PKG 01 FEB 2021  
Rev. Description Date



Drawing Title: KEY PLAN

LEVEL 02 FURNITURE  
PLAN - AREA B

Project No.: 005975.00 Checked by: Checker

IF2.1B

© 2019 The Cannon Corporation





UNIVERSITY OF TEXAS  
HEALTH SCIENCE  
CENTER  
BEHAVIORAL HEALTH  
CONTINUUM OF CARE  
FURNITURE

CANNONDESIGN

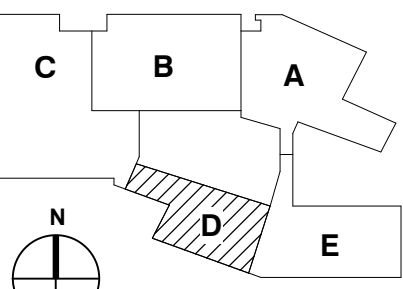
3737 BUFFALO SPEEDWAY, SUITE 1200  
HOUSTON, TX 77098  
P: 713.621.2100

www.cannondesign.com

FOR REFERENCE ONLY

FURNITURE RFP ADDENDUM 2 4/5/2021

95% FURNITURE SPEC PKG 01 FEB 2021  
REV. Description Date



Drawing Title: KEY PLAN

LEVEL 02 FURNITURE  
PLAN - AREA D

Project No.: 005975.00 Checked by: Checker

IF2.1D

© 2019 The Cannon Corporation



BM 350.0/UTMSC - Houston Continuum of Care/FURNITURE/UTMSC - HMC/3 - R10/41



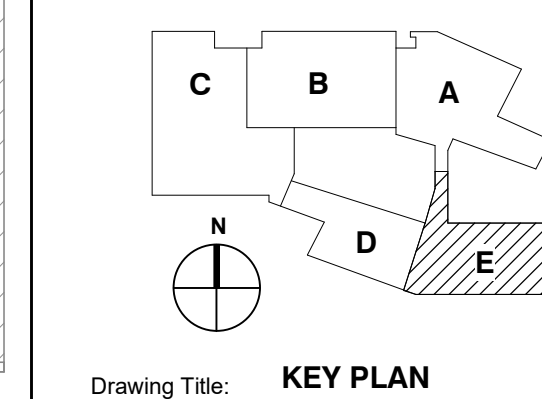
UNIVERSITY OF TEXAS  
HEALTH SCIENCE  
CENTER  
BEHAVIORAL HEALTH  
CONTINUUM OF CARE  
FURNITURE

**CANNONDESIGN**  
3737 BUFFALO SPEEDWAY, SUITE 1200  
HOUSTON, TX 77098  
P: 713.621.2100

www.cannondesign.com

FOR REFERENCE ONLY

FURNITURE RFP ADDENDUM 2	4/5/2021
Rev. Description	Date



**LEVEL 02 FURNITURE  
PLAN - AREA E**

Project No.: 005975.00 Checked by: Checker

**IF2.1E**

© 2019 The Cannon Corporation.



BM 360.0/UTMSC - Houston Continuum of Care/FURN.UTMSC-Hou-C3-R10x4



1 LEVEL 03 FURNITURE PLAN - AREA A  
3/16" = 1'-0"

UNIVERSITY OF TEXAS  
HEALTH SCIENCE  
CENTER

BEHAVIORAL HEALTH  
CONTINUUM OF CARE  
FURNITURE

CANNONDESIGN

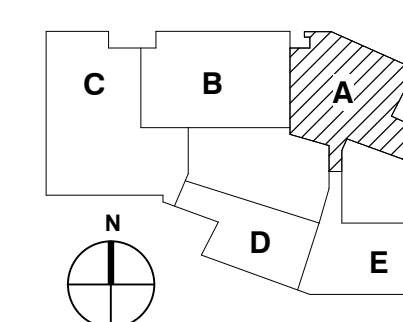
3737 BUFFALO SPEEDWAY, SUITE 1200  
HOUSTON, TX 77098  
P: 713.621.2100

www.cannondesign.com

FOR REFERENCE ONLY

FURNITURE RFP ADDENDUM 2 4/5/2021

95% FURNITURE SPEC PKG 01 FEB 2021  
Rev. Description Date



Drawing Title: KEY PLAN

LEVEL 03 FURNITURE  
PLAN - AREA A

Project No.: 005975.00 Checked by: Checker

IF3.1A

© 2019 The Cannon Corporation





UNIVERSITY OF TEXAS  
HEALTH SCIENCE  
CENTER  
BEHAVIORAL HEALTH  
CONTINUUM OF CARE  
FURNITURE

**CANNONDESIGN**

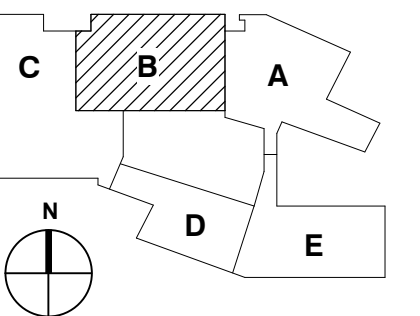
3737 BUFFALO SPEEDWAY, SUITE 1200  
HOUSTON, TX 77098  
P: 713.621.2100

www.cannondesign.com

FOR REFERENCE ONLY

FURNITURE RFP ADDENDUM 2 4/5/2021

95% FURNITURE SPEC PKG 01 FEB 2021  
Rev. Description Date



Drawing Title: **KEY PLAN**

**LEVEL 03 FURNITURE  
PLAN - AREA B**

Project No.: 005975.00 Checked by: Checker

**IF3.1B**

© 2019 The Cannon Corporation.



1 LEVEL 03 FURNITURE PLAN - AREA D  
3/16" = 1'-0"



UNIVERSITY OF TEXAS  
HEALTH SCIENCE  
CENTER

BEHAVIORAL HEALTH  
CONTINUUM OF CARE  
FURNITURE

**CANNONDESIGN**

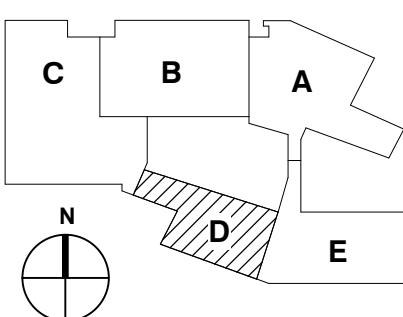
3737 BUFFALO SPEEDWAY, SUITE 1200  
HOUSTON, TX 77098  
P: 713.621.2100

www.cannondesign.com

FOR REFERENCE ONLY

FURNITURE RFP ADDENDUM 2 4/5/2021

95% FURNITURE SPEC PKG 01 FEB 2021  
Rev. Description Date



Drawing Title: KEY PLAN

**LEVEL 03 FURNITURE  
PLAN - AREA D**

Project No.: 005975.00 Checked by: Checker

**IF3.1D**

© 2019 The Cannon Corporation



## FOR REFERENCE ONLY

© 2019 The Cannon Corporation.

1 LEVEL 03 FURNITURE PLAN - AREA C  
3/16" = 1'-0"





UNIVERSITY OF TEXAS  
HEALTH SCIENCE  
CENTER

BEHAVIORAL HEALTH  
CONTINUUM OF CARE  
FURNITURE

**CANNONDESIGN**

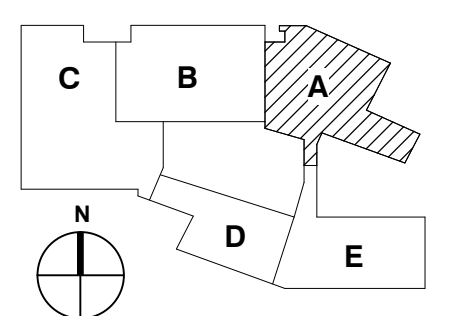
3737 BUFFALO SPEEDWAY, SUITE 1200  
HOUSTON, TX 77098  
P: 713.621.2100

[www.cannondesign.com](http://www.cannondesign.com)

FOR REFERENCE ONLY

FURNITURE RFP ADDENDUM 2 4/5/2021

95% FURNITURE SPEC PKG	01 FEB 2021
Rev. Description	Date

Drawing Title: **KEY PLAN**

**LEVEL 04 FURNITURE  
PLAN - AREA A**

---

Project No.: 005975.00      Checked by: Checker

## IF4.1A

© 2019 The Cannon Corporation.





FOR REFERENCE ONLY

© 2019 The Cannon Corporation



1 LEVEL 04 FURNITURE PLAN - AREA D  
3/16" = 1'-0"





FOR REFERENCE ONLY

© 2019 The Cannon Corporation

1 LEVEL 04 FURNITURE PLAN - AREA C  
3/16" = 1'-0"

## UT Health Behavioral Sciences Center

Full legal name of respondent:

All items in this package must be included in the proposal and all blanks filled in.

The unit prices for the following items will be held at the cost shown until December 31, 2021.

Contractor shall provide and install each item as listed below.

UNIT PRICES OF

### PKG 4 NORIX

ITEM #	QTY	MODEL NUMBER	UNIT COST	EXT. COST
CH-4A	8			
CH-4B	14			
CH-4C	9			
CH-5A	27			
CH-5C	13			
CH-6	40			
CH-19A	50			
CH-19B	10			
CH-20	10			
CH-25	10			
T-3	24			
T-4	47			
T-5	36			
T-9	62			
Delivery & Installation				
<b>GRAND TOTAL FOR THIS PACKAGE</b>				

No substitutions will be accepted.

Submit live excel file on Box.com - this bid tab must be filled in.

Email [spapp@cannondesign.com](mailto:spapp@cannondesign.com) for Box.com invitation.

## UT Health Behavioral Sciences Center

Full legal name of respondent:

All items in this package must be included in the proposal and all blanks filled in.

The unit prices for the following items will be held at the cost shown until December 31, 2021.

Contractor shall provide and install each item as listed below.

UNIT PRICES OF

### PKG 4B NORIX

ITEM #	QTY	MODEL NUMBER	UNIT COST	EXT. COST
CH-4B	4			
CH-5C	5			
T-9	2			
Delivery & Installation				
<b>GRAND TOTAL FOR THIS PACKAGE</b>				

No substitutions will be accepted.

Submit live excel file on Box.com - this bid tab must be filled in.

Email [spapp@cannondesign.com](mailto:spapp@cannondesign.com) for Box.com invitation.

Full legal name of respondent:

All items in this package must be included in the proposal and all blanks filled in.

The unit prices for the following items will be held at the cost shown until December 31, 2021.

Contractor shall provide and install each item as listed below.

UNIT PRICES OF

## PKG 5 VARIOUS

ITEM #	QTY	MODEL NUMBER	UNIT COST	EXT. COST
<b>MINERVA BEAUTY</b>				
CH-23	2			
<b>CRAMER</b>				
CH-24	2			
<b>COMPUTER COMFORTS</b>				
T-11	60			
<b>ROUSSEAU METAL</b>				
T-17A	1			
T-17B	1			
<b>RUBBERMAID</b>				
A-2	144			
<b>FORMS AND SURFACES</b>				
T-19	11			
<b>OPTO SYSTEMS</b>				
ST-1	2			
ST-2				
<b>OFS</b>				
CH-17	1			
D-7	1			
D-8	1			
D-9	1			
D-10	1			
T-13	1			
Delivery & Installation				
<b>GRAND TOTAL FOR THIS PACKAGE</b>				

No substitutions will be accepted.

Submit live excel file on Box.com - this bid tab must be filled in.

## UT Health Behavioral Sciences Center

Email [spapp@cannondesign.com](mailto:spapp@cannondesign.com) for Box.com invitation.



## UT Health Behavioral Sciences Center

Full legal name of respondent:

All items in this package must be included in the proposal and all blanks filled in.

The unit prices for the following items will be held at the cost shown until December 31, 2021.

Contractor shall provide and install each item as listed below.

UNIT PRICES OF

### PKG 5A VARIOUS

ITEM #	QTY	MODEL NUMBER	UNIT COST	EXT. COST
<b>COMPUTER COMFORTS</b>				
T-11	6			
<b>RUBBERMAID</b>				
A-2	4			
Delivery & Installation				
<b>GRAND TOTAL FOR THIS PACKAGE</b>				

No substitutions will be accepted.

Submit live excel file on Box.com - this bid tab must be filled in.

Email [spapp@cannondesign.com](mailto:spapp@cannondesign.com) for Box.com invitation.

## UT Health Behavioral Sciences Center

Full legal name of respondent:

All items in this package must be included in the proposal and all blanks filled in.

The unit prices for the following items will be held at the cost shown until December 31, 2021.

Contractor shall provide and install each item as listed below.

UNIT PRICES OF

### PKG 5B VARIOUS

ITEM #	QTY	MODEL NUMBER	UNIT COST	EXT. COST
<b>RUBBERMAID</b>				
A-2	26			
Delivery & Installation				
<b>GRAND TOTAL FOR THIS PACKAGE</b>				

No substitutions will be accepted.

Submit live excel file on Box.com - this bid tab must be filled in.

Email [spapp@cannondesign.com](mailto:spapp@cannondesign.com) for Box.com invitation.

## UT Health Behavioral Sciences Center

Full legal name of respondent:

All items in this package must be included in the proposal and all blanks filled in.

The unit prices for the following items will be held at the cost shown until December 31, 2021.

Contractor shall provide and install each item as listed below.

UNIT PRICES OF

### PKG 6 VARIOUS

ITEM #	QTY	MODEL NUMBER	UNIT COST	EXT. COST
<b>NUCRAFT</b>				
T-20	1			
<b>SPEC</b>				
CH-8	16			
CH-15	10			
T-1A	40			
T-1B	4			
T-8	24			
<b>WENGER</b>				
ST-3	1			
<b>BERNHARDT</b>				
CH-27	3			
Delivery & Installation				
<b>GRAND TOTAL FOR THIS PACKAGE</b>				

No substitutions will be accepted.

Submit live excel file on Box.com - this bid tab must be filled in.

Email [spapp@cannondesign.com](mailto:spapp@cannondesign.com) for Box.com invitation.

## UT Health Behavioral Sciences Center

Full legal name of respondent:

All items in this package must be included in the proposal and all blanks filled in.

The unit prices for the following items will be held at the cost shown until December 31, 2021.

Contractor shall provide and install each item as listed below.

UNIT PRICES OF

### PKG 6B VARIOUS

ITEM #	QTY	MODEL NUMBER	UNIT COST	EXT. COST
<b>SPEC</b>				
T-1A	7			
Delivery & Installation				
<b>GRAND TOTAL FOR THIS PACKAGE</b>				

No substitutions will be accepted.

Submit live excel file on Box.com - this bid tab must be filled in.

Email [spapp@cannondesign.com](mailto:spapp@cannondesign.com) for Box.com invitation.

## UT Health Behavioral Sciences Center

Full legal name of respondent:

All items in this package must be included in the proposal and all blanks filled in.

The unit prices for the following items will be held at the cost shown until December 31, 2021.

Contractor shall provide and install each item as listed below.

UNIT PRICES OF

### PKG 8 KNOLL

ITEM #	QTY	MODEL NUMBER	UNIT COST	EXT. COST
D-2L	41			
D-2R	37			
D-3L	2			
D-3R	6			
D-4	1			
D-5L	1			
D-5R	3			
D-6L	3			
D-6R	4			
D-11	2			
D-12	1			
F-1	67			
ST-5	76			
T-10	10			
T-18	13			
WS-1	2			
WS-2	4			
WS-3	1			
WS-4	1			
WS-5	2			
WS-6	2			
Delivery & Installation				
<b>GRAND TOTAL FOR THIS PACKAGE</b>				

No substitutions will be accepted.

Submit live excel file on Box.com - this bid tab must be filled in.

Email [spapp@cannondesign.com](mailto:spapp@cannondesign.com) for Box.com invitation.